



## MicroVAX 3100 and VAXserver 3100 Owner's Manual Update

This document provides updated information to the *MicroVAX 3100 and VAXserver 3100 Owner's Manual* (EK-A0371-OM). Please update your manual accordingly.

### Section 2.2, page 2-2

#### Update your manual from:

"The shipping carton contains three boxes and an accessory tray. The large box under the accessory tray contains the system unit."

#### To:

"The shipping carton contains three boxes. The largest box contains the system unit."

#### Update your manual from:

"The other two boxes contain the country kit and the software licenses respectively."

#### To:

"The other two boxes contain the country kit and the accessories respectively."

## **Page 2-3, Figure 2-1**

### **Update your manual from:**

Figure 2-1 in your Owner's Manual references "ACCESSORY TRAY CONTENTS."

### **To:**

Figure 1 in this Update shows the new label "ACCESSORIES."

### **Update your manual from:**

Figure 2-1 in your Owner's Manual references "SCREWDRIVER."

### **To:**

Eliminate the word "Screwdriver" along with picture of the screwdriver.

## **Page 2-3, Figure 2-1**

### **Update your manual from:**

Figure 2-1 in the Owner's Manual contains an item labeled "DEC423 to RS232 Adapter (H8571-A)" under Accessory Tray Contents.

### **To:**

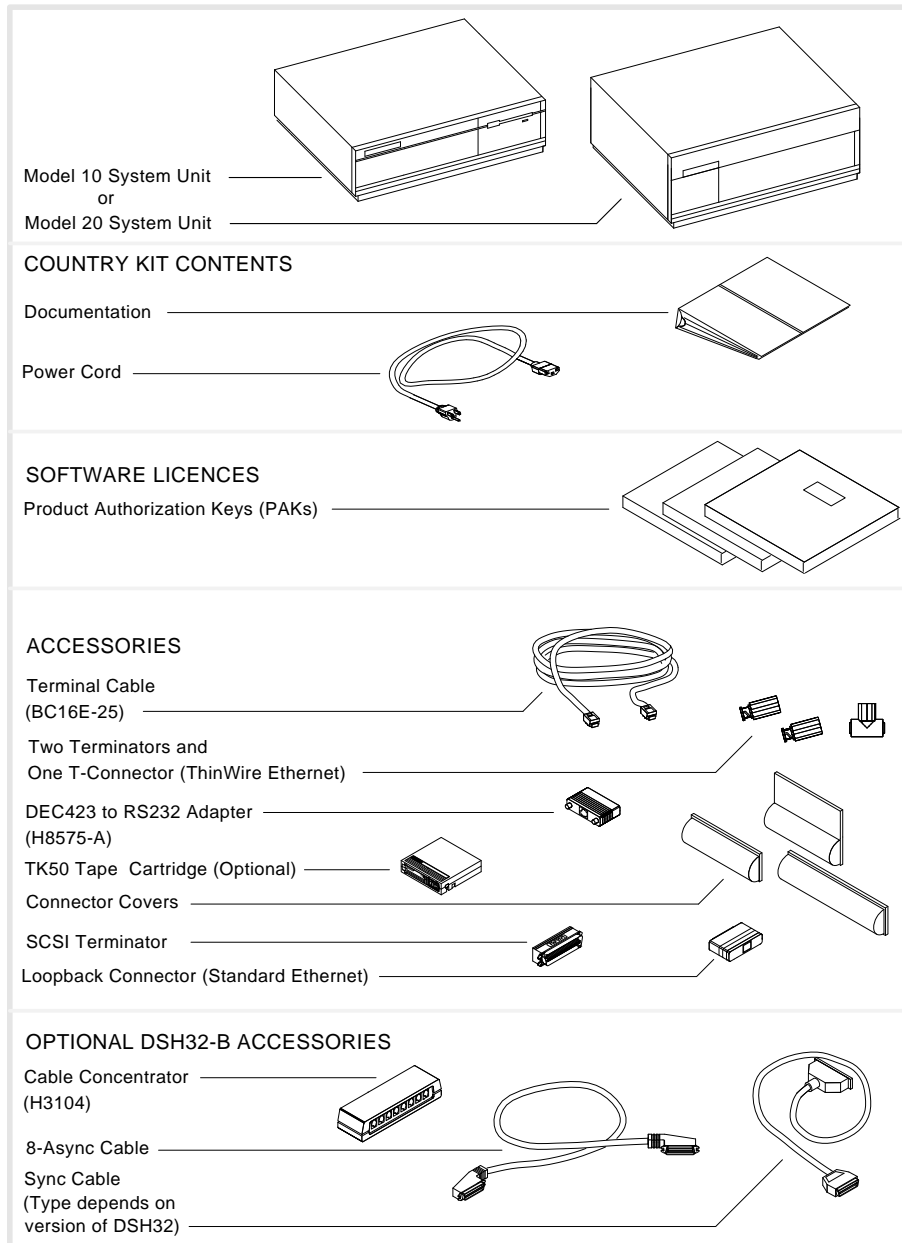
Replace that label with this new label "DEC423 to RS232 Adapter (H8575-A)."

### **Update your manual from:**

Figure 2-1 in the Owner's Manual references "TK50 TAPE CARTRIDGE."

### **To:**

Replace that label with this new label "TK50 TAPE CARTRIDGE (OPTIONAL)."



**Figure 1 Unpacking Your System**

## **Page 2-17, Section 2.7.1**

### **Update your manual from:**

"Do you want to enter Customer's cluster and password information?  
(Y/N) Y [Return]"

"Will this node be a cluster member (Y/N)? N [Return]"

### **To:**

"Do you want to enter Customer's cluster and password information?  
(Y/N) Y [Return]"

"The system time is DD-MMM-YYYY HH:MM:SS.nn \* Is this correct?  
(Y/N)"

"Will this node be a cluster member (Y/N)? N [Return]"

## **Page 2-17, Section 2.7.1**

### **Update your manual from:**

"Will this node be a cluster member? (Y/N) N [Return]"

"Enter account passwords and press RETURN in response to the system  
prompts as follows:"

### **To:**

"Will this node be a cluster member? (Y/N) N [Return]"

"Do you want DECwindows as the default windowing system? (Y/N)"

"Enter account passwords and press RETURN in response to the system  
prompts as follows:"

## Page 2-17, Section 2.7.1

### Update your manual from:

"%UAF-I-RDBDONEMSG, rights database modified"

"The system then reboots automatically to complete the configuration changes."

### To:

"%UAF-I-RDBDONEMSG, rights database modified"

"After the installation finishes, you should do some or all of the following tasks:

"The system then reboots automatically to complete the configuration changes."

**BACKUP THE SYSTEM DISK, TAILOR THE SYSTEM DISK,  
REGISTER ANY PRODUCT AUTHORIZATION KEYS."**

The system will then automatically run SYSGEN to recalculate system parameters.

"Running AUTOGEN to compute the new SYSGEN parameters"

Copyright © by Digital Equipment Corporation 1990  
All Right Reserved.  
Printed in the U.S.A.