

Digital Series 500 Printers

Setting Up Your Printer

Order Number: EK-LJ50A-SU-001

Digital Equipment Corporation
Maynard, Massachusetts

First Printing, December 1994

Digital Equipment Corporation makes no representations that the use of its products in the manner described in this publication will not infringe on existing or future patent rights, nor do the descriptions contained in this publication imply the granting of licenses to make, use, or sell equipment or software in accordance with the description.

The information in this document is subject to change without notice and should not be construed as a commitment by Digital Equipment Corporation. Digital Equipment Corporation assumes no responsibility for any errors that may appear in this document.

Possession, use, or copying of the software described in this publication is authorized only pursuant to a valid written license from Digital or an authorized sublicensor.

The software described in this guide is furnished under a license agreement or nondisclosure agreement. The software may be used or copied only in accordance with the terms of the agreement.

© Digital Equipment Corporation 1994. All rights reserved.

The following are trademarks of Digital Equipment Corporation:

Digital Series 500, DECcolor Works, DEC and the DIGITAL logo.

All other trademarks and registered trademarks are the property of their respective holders.



The Energy Star™ emblem does not represent EPA endorsement of any product or service.

Table of Contents

Introduction	1
System Requirements	1
Installation Procedure.....	1
Unpacking the Printer	2
Identifying your Printer Model.....	2
Connecting the Printer.....	3
Connecting the Printer to the Computer.....	3
Connecting the Printer to the Power Outlet.....	4
Loading the Paper	5
Preparing the Paper Tray	5
Loading the Paper in the Tray	6
Inserting the Paper Tray in the Printer	7
Installing a Print Head.....	9
Positioning the Print Head Selection Lever	9
Inserting a Print Head.....	10
Removing the Print Head	12
Running the Printer Self Test.....	13
Installing a Windows Print Driver	14
Running a Windows Print Test	16

Introduction

This is a short guide to installing and setting up your Digital Series 500 printer to operate in the Windows 3.1/3.11 environment. You should follow each installation step in sequence. To become familiar with all the parts of your printer, see Chapter 1 of the *User Guide*.

System Requirements

The following hardware and software specifications are required in order to allow the proper installation and functioning of your printer.

- Operating System: Windows 3.1/3.11.
- Computer:
 - PC 386 and up.
 - RAM: 2 Mbytes or more.

Installation Procedure

To install your printer you need to perform the steps described on the following pages:

- Step 1 - Unpacking the Printer.
- Step 2 - Connecting the Printer.
- Step 3 - Loading the Paper.
- Step 4 - Installing a Print Head.
- Step 5 - Running the Printer Self Test.
- Step 6 - Installing a Windows Printer Driver.
- Step 7 - Running a Windows Print Test.

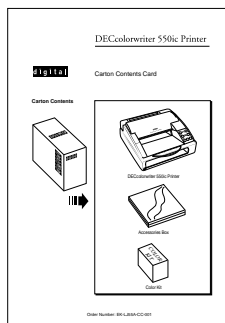
Step 1

Unpacking the Printer

Identifying your Printer Model

The *Carton Contents Card* allows you to identify your own printer model among the Digital Series 500 family.

1. Unpack the contents of the carton.
2. Remove all packing from the printer.
3. Check all printer parts are present and undamaged, by consulting your specific printer *Carton Contents Card*, included in the accessories box.



Example Carton Contents Card

Caution: *Keep the carton and all the packing materials in case you have to transport the printer any distance, relocate it, or return it to Digital Services for maintenance.*

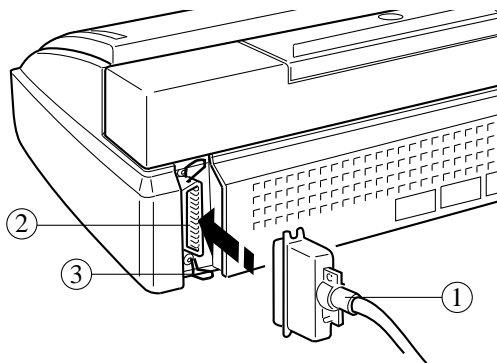
Step 2

Connecting the Printer

Connecting the Printer to the Computer

Note: The necessary parallel interface cable is not included in the printer package. Your dealer can supply you with the interface cable.

1. Connect the printer end of the parallel interface cable ① to the parallel port ② at the back of the printer.
2. Close the spring clips on the printer cable ③.
3. Connect the computer end of the parallel interface cable to the appropriate parallel port on your computer (**LPT1**, for example).



Connecting the Parallel Interface Cable

Connecting the Printer to the Power Outlet

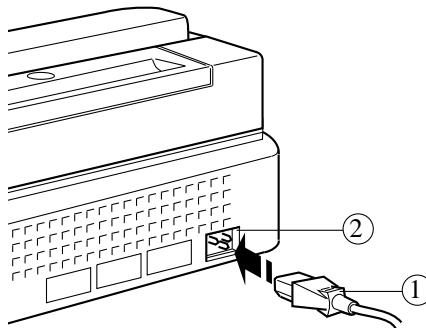
Warning: BEFORE connecting the printer to the power outlet and/or switching it on, read all the following points carefully:

The manufacturer declines all responsibility for accidents to persons or damage to the printer arising from the non-observance of the following procedure.

Make sure the power outlet supplies the voltage indicated on the electrical data plate at the rear of the printer.

If the electrical data plate indicates a different voltage, call your dealer immediately. **DO NOT, UNDER ANY CIRCUMSTANCES, CONNECT OR SWITCH ON THE PRINTER.**

1. Connect the power cable ① into the power socket ② at the back of the printer.
2. Plug the other end of the power cable into the power wall socket.



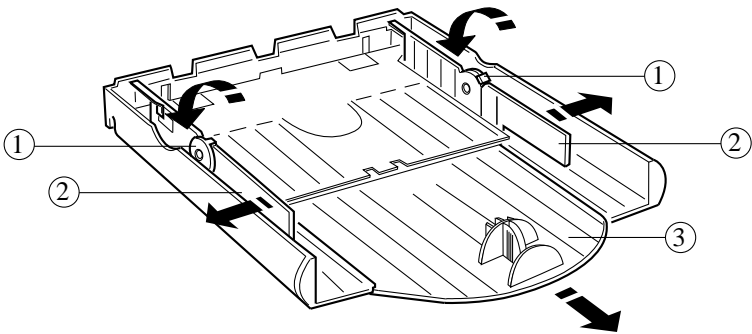
Connecting the Power Cable into the Power Socket

Step 3

Loading the Paper

Preparing the Paper Tray

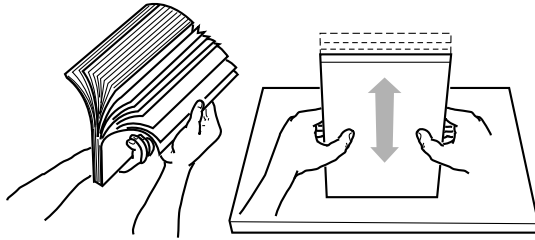
1. Push the locks ① towards the OPEN position to unlock the side paper guides.
2. Open the side paper guides ②, pushing them towards the sides of the paper tray.
3. Pull out the extendible guide ③ on the paper tray.



Preparing the Paper Tray

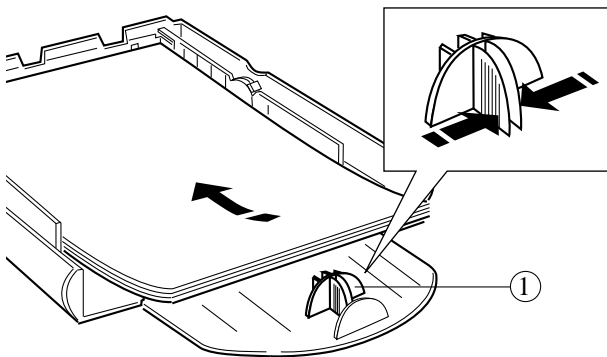
Loading the Paper in the Tray

1. Take a stack of about 100 sheets of paper, fan the sheets by flicking the edge with your thumb and then tap the edge to align the sheets, to ensure a smooth feed into the printer.



Fanning the Paper

2. Place the paper stack in the paper tray.
3. Depending on the paper you use, either remove the paper stop ① by pinching its striped arms or mount it in the holes corresponding to your paper size (see table on next page).



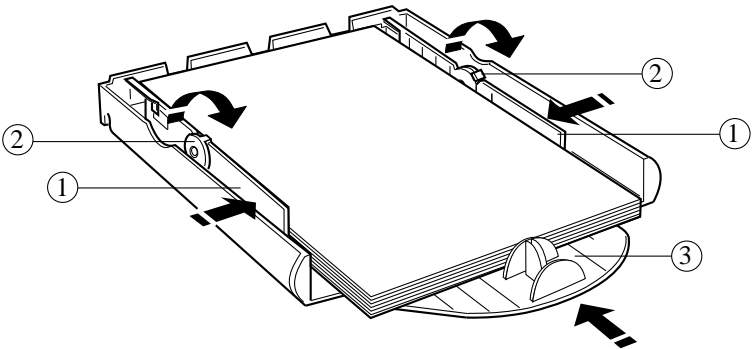
Placing the Paper Stack in the Paper Tray

The following table shows which paper sizes require the paper stop:

Paper Size	What to Do with the Paper Stop
Letter	Mount the paper stop at the LTR position
Legal	Remove the paper stop
A4	Remove the paper stop
A5	Mount the paper stop at the A5 position

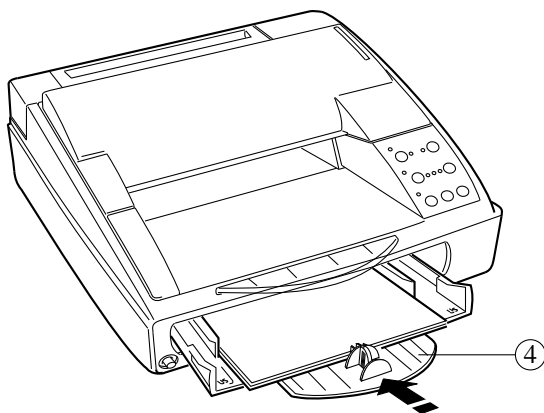
Inserting the Paper Tray in the Printer

1. Push the side paper guides ① inwards against the edges of the paper stack.
2. Lock the paper guides ②, by pushing the locks towards the CLOSE position.
3. Push the extendible guide ③ in, until it stops against the edge of the paper stack.



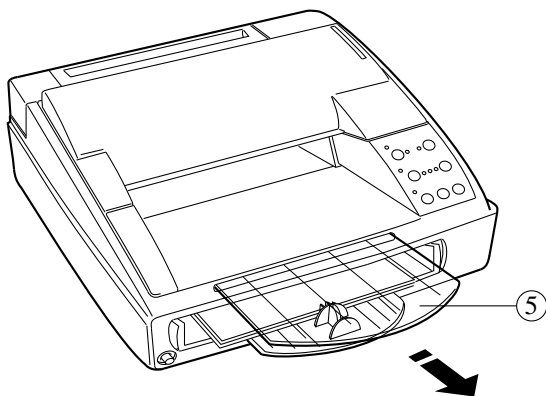
Securing the Paper Stack

4. Insert the paper tray ④ into the front slot of the printer.



Inserting the Paper Tray in the Printer

5. Pull out the transparent extendible support ⑤ to receive the ejected printed pages.



Pulling Out the Transparent Extendible Support

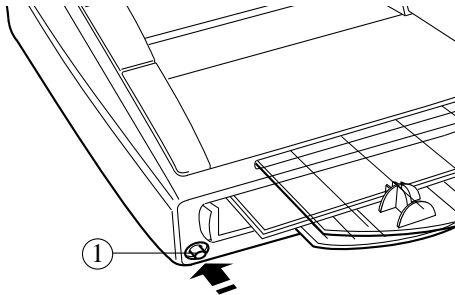
Step 4

Installing a Print Head

Positioning the Print Head Selection Lever

Before installing a print head, it is important to position the print head selection lever to match the print head type you intend to install.

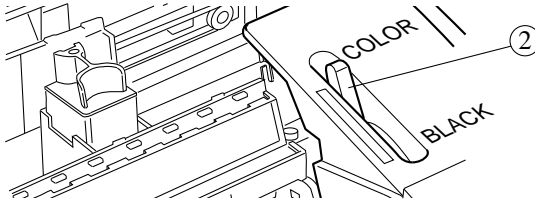
1. Switch on the printer, by pressing the power switch ①. The On Line and other indicators light up, depending on your printer setup.



Switching On the Printer

2. Press the Install Cartridge button on the operator panel to move the print head carriage to its loading position.
3. Open the top cover of the printer.

4. Move the selection lever ② (located above the operator panel) to the position that matches your print head type, as indicated near the lever: BLACK for a monochrome print head, COLOR for a color print head.

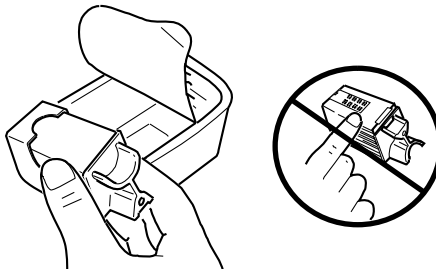


Moving the Print Head Selection Lever

Caution: *If the print head selection lever position does not match the print head you install, the printer will not function and the Color indicator will flash.*

Inserting a Print Head

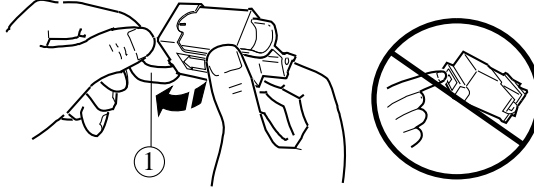
1. Open the sealed print head container.
2. Remove the print head from its container, holding it by the casing, at the side opposite the protective tape.



Removing the Print Head from its Container

Caution: *Do not touch the electrical contacts or sit the print head on them.*

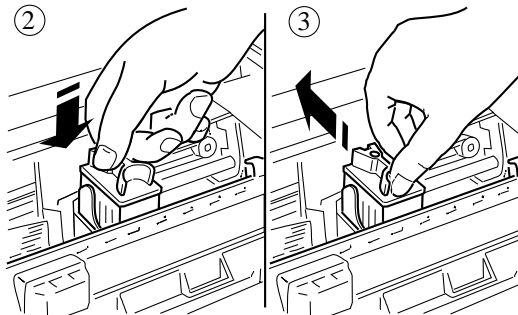
3. Still holding the print head casing, **remove the transparent protective tape** ①, pulling its tab end in the direction indicated by the arrow.



Removing the Transparent Protective Tape

Caution: *Do not touch the printing nozzles or sit the print head on them.*

4. **With the electrical contacts facing towards the back of the printer**, insert the print head in the print head carriage by:
 - Placing it in the carriage ②.
 - Pushing it gently towards the back of the printer ③ until it clicks.



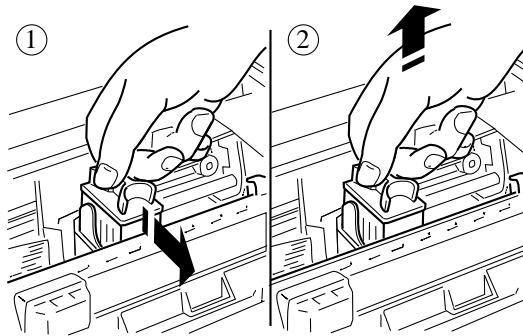
Inserting the Print Head

5. Press the Install Cartridge button on the operator panel to return the print head carriage to its ready position.
6. Close the top cover.

Removing the Print Head

You need to remove the print head when it is empty or in order to switch from monochrome to color printing (or to switch from color to monochrome printing).

1. Press the Install Cartridge button.
2. Open the top cover of the printer.
3. Remove the print head from its carriage by:
 - Pulling it towards the front of the printer by its top casing ①.
 - Pulling it upwards out of the carriage ②.



Removing the Print Head

Step 5

Running the Printer Self Test

Before running the printer self test, check the following:

- Paper is loaded in the tray.
- Print head is properly installed.
- Print head selection lever position matches the print head type: BLACK for a monochrome print head, COLOR for a color print head.

To run the printer self test:

1. Switch off the printer.
2. Hold down the On Line button on the operator panel, while you switch on the printer.
3. Wait for the test printout:
 - With a monochrome print head (black ink), the print test produces 4 test pages.
 - With a color print head, a single test page is produced.

Caution: *If the print head selection lever position does not match the print head you install, the printer will not function and the Color indicator will flash.*

4. Check the printed test pages for any print problems (incomplete or misaligned characters due to blocked ink nozzles). For more information about the test pages contents, see the *Digital Series 500 Printers - User Guide*.

Step 6

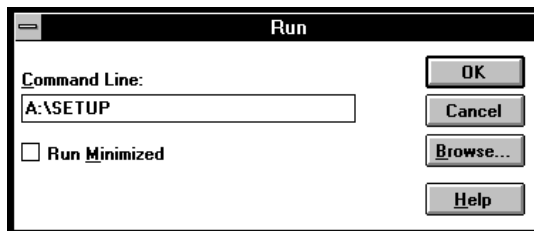
Installing a Windows Print Driver

Before you can start printing from a Windows application, you must first install a Windows printer driver control program.

Two types of driver are available with the Digital Series 500 printers: **Digital Series 500-Monochrome** for monochrome printing, and **DECcolor Works** for color printing on a **Digital Series 500-Color** printer. Each driver is provided on a separate diskette, according to the *Carton Contents Card* printer configuration.

If you have both the monochrome and the color drivers, install both to get maximum benefit from your Digital Series 500 printer. You need to perform the same installation procedure for each driver as follows:

1. Switch on your printer and computer.
2. Insert a driver diskette into your diskette drive **A:**.
3. Start up **Windows** on your computer.
4. From **Program Manager**, select the **File** menu option **Run....**
5. In the **Run** window, type “**A:\SETUP**”.



6. Click once on the **OK** button. The installation program automatically performs the setup procedure.

Once the setup is complete, your printer driver is installed as the default printer and the following window appears:



Depending on your configuration and your use for the printer, you can choose between three possibilities:

- You can modify the port to which your printer driver is attached by selecting an option in the drop-down menu ①.
- You can return to Windows by clicking on the **Continue** button. A specific window appears, allowing you to run the Windows print test (see Step 7 - Running a Windows Print Test).
- You can modify your printer driver setup by clicking on the **Printer Setup** button.
 - To get more information about your monochrome printer driver setup, see Chapter 4 in the *Digital Series 500 Printers - User Guide*.
 - To get more information about your color printer driver setup, see Chapter 3 in the *DECcolor Works Printer Driver - User Guide*.

Step 7

Running a Windows Print Test

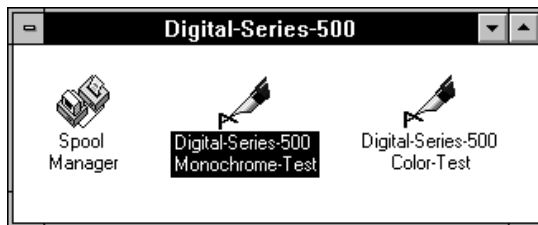
Once the printer driver installation is complete and depending on your printer configuration, you can easily launch the monochrome or the color Windows print test.

1. If you have closed the **Digital-Series-500** program group window after the printer driver installation, double click on the **Digital-Series-500** icon in the **Program Manager** window.



Digital-Series-500

2. In the **Digital-Series-500** group window, double click on the icon indicating the print test you want to run. The **Write** application is launched.



Example Digital Series 500 Group Window

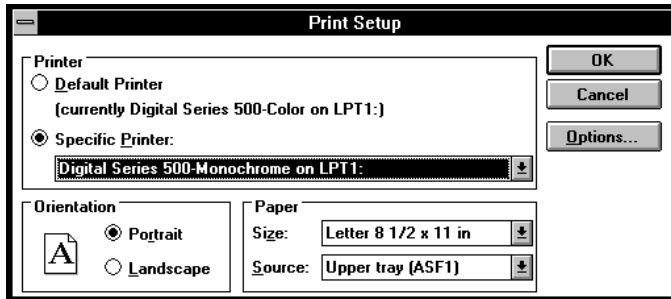
Caution: Check that the print head type and the print head selection lever position match the print test you intend to run.

3. From the **File** menu, choose **Print Setup...** and ensure the printer you want to test is selected in the **Printer** box: **Digital Series 500-Monochrome** for the monochrome test, **Digital Series 500-Color** for the color test.

Note: If you select the **Digital Series 500-Color** printer, complete the following steps:

- Click on the **Options...** button.
- In the **Printhead / Resolution** dialog box, ensure that the **Color (CMY)** printing option is enabled.
- Click on the **OK** button.

-
4. In the **Size:** scroll box, select the paper size according to the paper loaded in your printer.



Note: In the **Source:** scroll box, **Upper tray (ASF1)** corresponds to the built-in paper tray.

5. Click once on the **OK** button.
6. Select **Print...** from the **File** menu.
7. Click once on the **OK** button.

8. Wait for the test printout.
9. Check the quality of the printout.
10. Close the **Write** application.

Your printer is now set up for printing from Windows applications.