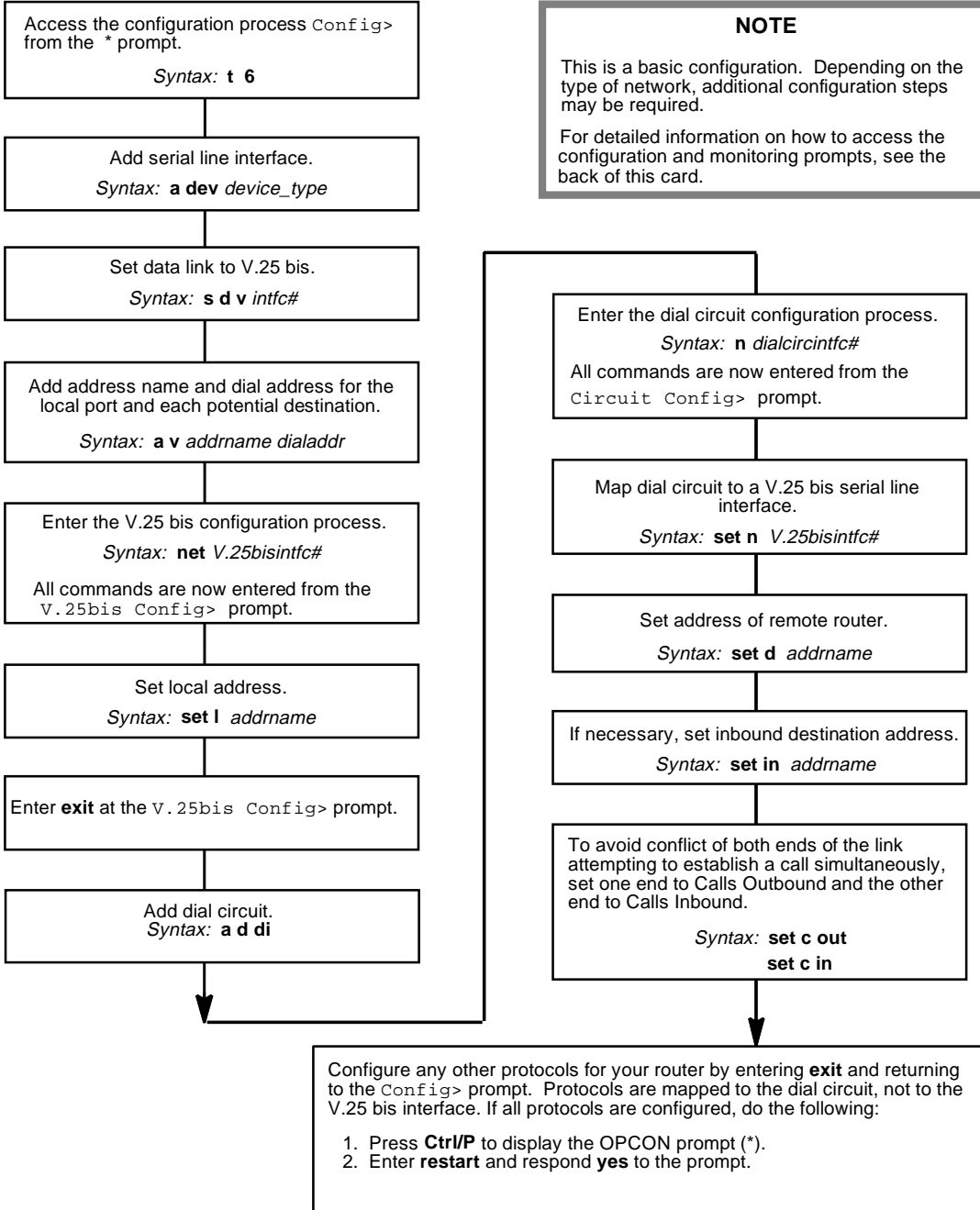


V.25 bis Initial Configuration



NOTE

This is a basic configuration. Depending on the type of network, additional configuration steps may be required.

For detailed information on how to access the configuration and monitoring prompts, see the back of this card.



V.25 *bis* Configuration Commands

This quick reference card summarizes the V.25 *bis* configuration and console commands as well as Dial Circuit configuration commands. The front panel of this card provides the initial configuration steps for this protocol. The back panel tells you how to access the CONFIG process.

Enter the following configuration commands at the `V.25bis Config>` prompt. To list the configuration commands and their options, enter a `?`.

After you have configured all of the protocols, enter **restart** at the `OPCON` prompt (`*`), and respond **yes** to the following prompt:

```
Are you sure you want to restart the router? (Yes or No): yes
```

list

Displays the current V.25 *bis* configuration.

set

command-delay-timeout *# of milliseconds*

Maximum amount of time the router waits for the modem to respond to DTR with CTS. If the modem does not respond by the end of this delay, the router initiates or answers the call. Default is 0, which causes the router to wait for a CTS signal before it issues commands. Range is 0-65535.

connect-timeout *# of seconds*

Number of seconds allowed for a call to be established. Default is 60. Range is 0-65535.

disconnect-timeout *# of seconds*

Maximum amount of time after dropping a signal (CTS, DSR, or RI) that the router waits for the modem to respond before it initiates further calls. Default is 2. Range is 0-65535.

local-address *address name*

Network address name of the local port.

retries-no-answer *# of calls*

Limits number of successive calls to an address that is inaccessible or that refuses those calls. Specifies the maximum number of calls the router attempts to a nonresponding address during the timeout period. Default is 1. Range is 0-10.

timeout-no-answer *# of seconds*

After the router reaches the maximum number of RETRIES-NO-ANSWER to a nonresponding address, it does not make any further calls to that address until this time has expired. This timeout period begins when the router attempts the first call to an address. Default is 0. Range is 0-65535.

exit

Returns to the `Config>` prompt.

Dial Circuit Configuration Commands

This section summarizes the dial circuit configuration commands. Enter the following configuration commands at the `Circuit Config>` prompt. To list the configuration commands and their options, enter a `?`.

ddelete

`inbound destination`

Removes the INBOUND destination and the ANY_INBOUND settings from the dial circuit configuration.

encapsulator

Enters the configuration process for the link-layer protocol that is running on the dial circuit.

list

Displays the current dial circuit configuration.

set

`net # of serial line interface`

Specifies number of the V.25 bis serial line interface to which you want to map this circuit.

`calls outbouna or inbound or both`

Sets up dial circuit to initiate outbound calls only, accept inbound calls only, or both initiate and accept calls. Default is both.

`destination address name`

Required for the dial circuit to operate. Specifies network dial address of the remote router to which this dial circuit will connect.

`inbound destination address name`

Enter this address name if the dial circuit is set up for both inbound and outbound calls and if the remote router's LOCAL ADDRESS is different from the address this router would use to call the remote router.

`any_inbound`

Specifies that inbound calls that do not match any other dial circuit will be mapped to this circuit and accepted as inbound calls.

`idle # of seconds`

Sets a timeout period for the circuit. If there is no protocol traffic over the circuit for this length of time, the dial circuit hangs up. Set to zero to specify a dedicated circuit. Default is 60. Range is 0-65535.

`selftest-delay # of milliseconds`

Delays the time between when the call is established and the initial packet is sent. Default is 150. Range is 0 – 65535.

exit

Returns to the `Config>` prompt.

V.25 *bis* Console Commands

Enter these commands from the `V.25bis>` prompt. The back of this card tells you how to access the CGWCON process. To list the V.25 *bis* console commands and their options, enter a ? at the `V.25bis>` prompt.

calls

Lists the number of completed and attempted connections made for each dial circuit mapped to this interface since the last time statistics were reset on the router.

circuits

Shows the status of all dial circuits mapped to this V.25 *bis* interface.

parameters

Displays the current V.25 *bis* serial line configuration.

statistics

Displays the current statistics for this V.25 *bis* interface.

exit

Returns to the GWCON (+) prompt.

Accessing the CONFIG Process

Use the CONFIG process to display and change the current configuration in static RAM (SRAM).

To display the CONFIG prompt (Config>):

1. After the router boots, the console displays the * prompt. Enter **status** to display the pid (process ID) of CONFIG, which is usually 6.
2. Enter **talk** and the pid (6) for CONFIG. This displays the following information:

```
Gateway user configuration
Config>
```

If the Config> prompt does not appear, press Return again. You can now enter the configuration commands.

3. When you are done entering the configuration commands, do the following to make the new configuration active:
 - a. Press **Ctrl/P** after the Config> prompt.

```
Config> ^p
*
```

- b. Enter **restart** after the * prompt.

- c. Respond **yes** to the following prompt:

```
Are you sure you want to restart the gateway? (Yes or No): yes
The new configuration is loaded when the console displays the following information:
Copyright 1995-1996 Digital Equipment Corp.
```

```
MOS Operator Control
*
```

Accessing the CGWCON Process

Use the CGWCON (also known as GWCON) process to monitor protocols, network interfaces, and system messages. You cannot access the CGWCON process if the router is in configuration-only mode (the prompt is Config only>). To display the CGWCON prompt (+):

1. After the router boots, the console displays the * prompt. Enter **status** to display the pid (process ID) of CGWCON, which is usually 5.
2. Enter **talk** and the pid (5) for CGWCON. This displays the CGWCON prompt (+). You can now enter the monitoring commands.

To return to the * prompt, press Ctrl/P.



Copyright © Digital Equipment Corporation 1996. All rights reserved.

DEC, DECnet, OpenVMS, PATHWORKS, ThinWire, VAX, VAXcluster, VMS, VT, and the DIGITAL logo are trademarks of Digital Equipment Corporation.

All other trademarks and registered trademarks are the property of their respective holders.

