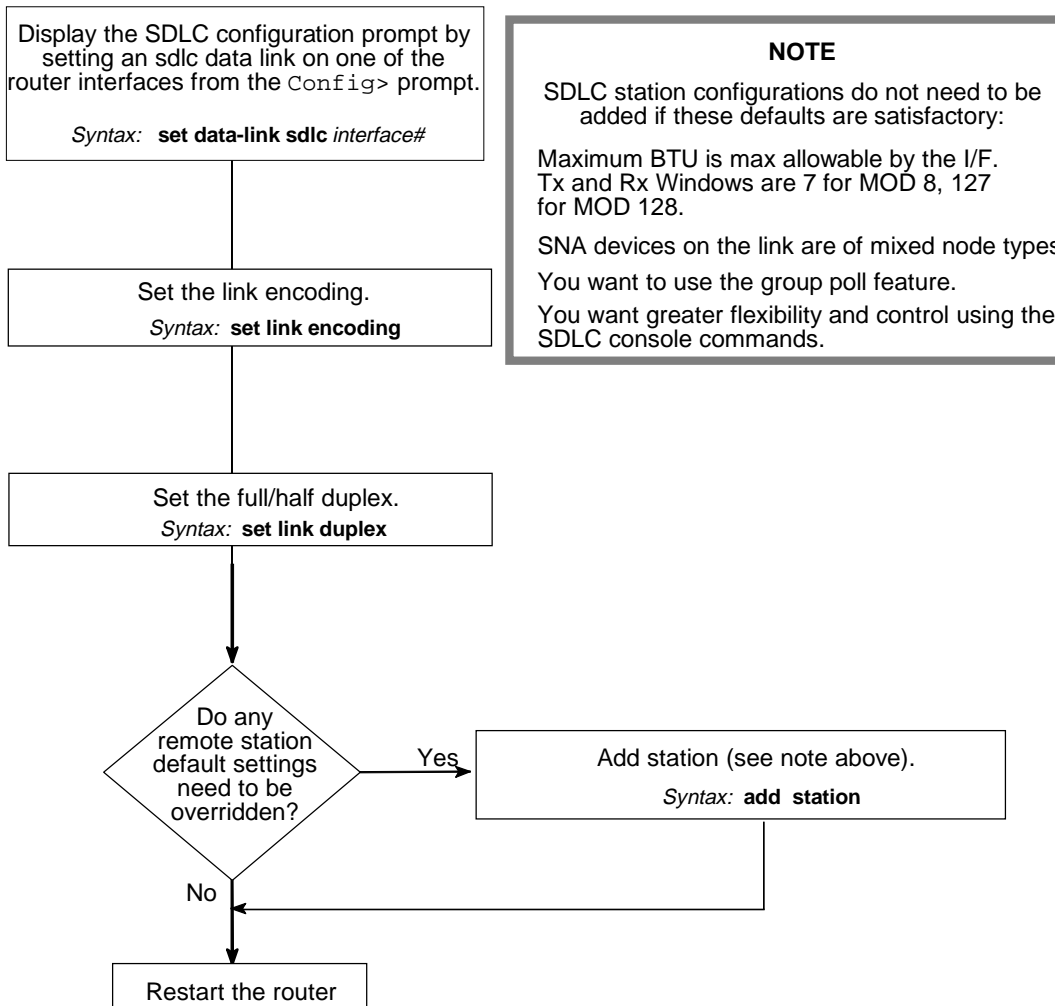


## Configuring SDLC Interfaces



## SDLC Configuration Commands

This section summarizes the SDLC configuration commands. Enter these commands at the SDLC # `Config`> prompt, where # represents the number of the router interface associated with the SDLC data link. Enter ? to list available commands or their options.

### **add**

remote-secondary  
Adds a remote-secondary end-station.

### **delete**

remote-secondary  
Deletes a specified remote-secondary end-station.

### **disable**

link  
Prevents the transmitting and receiving of data to all configured SDLC link stations on the interface, and terminates existing connections to the specified station.

station  
Prevents the transmitting and receiving of data to the specified remote end-station.

### **enable**

link  
Allows subsystems in the router (for example, DLSw) to use SDLC's facilities.

station  
Allows connections to the specified remote end-station (link station name).

### **list**

link  
Displays information for one or all configured SDLC link stations on the interface.

remote-secondary *address, name or all*  
Displays information for the specified SDLC link station on the interface, or for all link stations.

### **set**

link clocking external  
Configures the SDLC link's clocking.

link duplex  
Configures the SDLC line for full-duplex or half-duplex.

link encoding  
Configures the SDLC transmission encoding scheme as NRZ or NRZI.

link frame-size  
Configures the maximum frame size that can be transmitted and received on the data link.

link group-poll  
Sets a group poll (unnumbered poll) address for the link (must be nonzero).

link idle flag  
Configures the transmit idle state for SDLC framing (7E hex) .

link idle mark  
Configures the transmit idle state for SDLC framing (Off, 1).

link modulo  
Specifies the sequence number range to use on the link: MOD 8 (0 to 7) or MOD 128 (0 to 127).

link name  
Establishes a name for the link that you are configuring. This parameter is for informational purposes only.

link poll delay  
Configures the time delay between polls sent over the interface.

## SDLC Configuration Commands (*Continued*)

**link poll retry**

Configures the number of times the interface retries to poll the remote SDLC link station before it decides the link station is down and closes the connection.

**link poll timeout**

Configures the amount of time the bridging router waits for a poll response before timing out.

**link role primary or negotiable**

Configures the interface as an SDLC primary link station (default). If there are any T2.1 devices on the SDLC link, set to negotiable link station.

**link rts-hold**

The time to hold RTS high after transmitting a frame. This setting is for half-duplex mode. This setting has no effect in full-duplex mode.

**link SNRM timeout**

The time to wait for a UA response before retransmitting an SNRM(E).

**link SNRM retry**

The number of times to retransmit an SNRM(E) without receiving a response before giving up.

**link speed**

For internal clocking, this command specifies the speed of the transmit and receive clock lines. For mixed clocking, the speed applies to the transmit clock line only.

**link inter-frame delay**

Allows the insertion of a delay between transmitted packets (521 microseconds). This command ensures a minimum delay between frames so that it is compatible with older, slower serial devices at the other end.

**link type multipoint or point-to-point**

Configures the SDLC link to either a multipoint link or a point-to-point link.

**link xid/test timeout**

The maximum amount of time to wait for an XID or TEST frame response.

**link xid/test retry**

The maximum number of times an XID or TEST frame is resent before giving up.

**station address**

Changes the remote station's SDLC address in the range 01 to FE.

**station max-packet**

The maximum size of the packet that a remote-secondary station can receive.

**station name**

The name designation of the SDLC station. This parameter is for informational purposes only.

**station node-type**

The node type of the station (PU2 or T2.1)

**station receive-window**

The maximum number of frames the router receives before sending a response.

**station transmit-window**

The maximum number of frames that the bridging router can transmit before receiving a response frame.

**exit**

Returns to the `Config>` prompt.

## SDLC Monitoring Commands

### **add**

station

Adds a secondary end-station. If you elect not to use this command, the router adds a remote-secondary end-station to ensure proper operation of the SDLC interface. The bridging router is considered the primary end-station.

### **clear**

link

Removes all statistics on the SDLC counters for the link station.

station *name or address or all*

Removes all statistics on the SDLC counters for the specified remote-secondary station, or for all stations.

### **delete**

station-secondary

Terminates an existing SDLC connection without affecting the SDLC configuration in static configuration memory. The bridging router is considered the primary end-station by default. Only disabled remote-secondaries may be deleted.

### **disable**

link

Prevents connection on all configured SDLC link stations on the interface by terminating all connections.

station

Prevents connection to the specified secondary-remote end-station (link station name) by terminating any existing connection.

### **enable**

link

Allows connection to be created on all configured SDLC link stations on the interface.

station

Enable connection establishment with the specified remote-secondary end-station (link station name).

### **list**

link configuration

Displays information for all configured SDLC link stations on the interface.

link counters

Displays information for the SDLC counters since the last bridging router restart or the last clear counters.

station *address, name or all*

Displays information for the specified SDLC link station (link station name) on the interface, or all link stations.

remote-secondary <name or address>  
counters

Displays frame transmit and receive counts for the specified remote secondary station.

### **set**

link duplex *full or half*

Dynamically changes the SDLC line for full-duplex or half-duplex without affecting the SRAM configuration.

## SDLC Monitoring Commands (*Continued*)

link group-poll

Sets a group poll (unnumbered poll) address for the link (must be nonzero).

link modulo

Dynamically changes the range of sequence numbers to be used on the data link without affecting the SRAM configuration. Modulo 8 specifies a sequence number range of 0 to 7, and modulo 128 specifies 0 to 127.

link name

Dynamically changes the name for the link without affecting the SRAM configuration. This parameter is for informational purposes only.

link poll delay

Dynamically changes the time delay between polls sent over the interface.

link poll timeout

Dynamically changes the amount of time the bridging router waits for a poll response before timing out.

link role *primary secondary or negotiable*

Configures the interface as an SDLC primary link station (default). If there are any T2.1 devices on the SDLC link, set to negotiable link station.

link rts-hold

Dynamically changes the time to hold RTS high after transmitting a frame without affecting the SRAM configuration. This setting is for half-duplex mode. This setting has no effect in full-duplex mode.

link snrm timeout

Dynamically changes the time to wait for a UA response before retransmitting an SNRM(E).

link snrm retry

Dynamically changes the number of times to retransmit an SNRM(E) without receiving a response before giving up.

link type *multipoint or point-to-point*

Dynamically changes the SDLC link to either a multipoint link or a point-to-point link without affecting the SRAM configuration.

link xid/test timeout

Dynamically changes the maximum amount of time to wait for an XID or TEST frame response before retrying.

link xid/test retry

Dynamically changes the maximum number of times an XID or TEST frame is resent before giving up.

station address

Dynamically changes the remote station's SDLC address in the range 01 to FE.

station max-packet

Dynamically changes the maximum size of the packet that a remote-secondary station can receive. This frame size must not be larger than the maximum packet size configured with the **set link frame-size** command. The default is 521 bytes.

station name

Dynamically changes the name of the SDLC station. This parameter is for informational purposes only.

station node-type

The node type of the station (PU2 or T2.1)

station receive-window

Dynamically changes the maximum number of frames the router can receive before sending a response.

## SDLC Monitoring Commands (*Continued*)

### sstation role

The role of the secondary link station. Use secondary for PU2.0 devices and negotiable for T2.1 devices. The defaults depend upon the link role of the corresponding link.

### station *transmit-window*

Dynamically changes the maximum number of frames that the bridging router can transmit before receiving a response frame.

### test

*remote name or address #frames-to-send  
frame-size*

Transmits a specified number of TEST frames to the specified remote-secondary link station and waits for a response. Use this command to test the integrity of the connection.

### exit

Returns to the previous prompt level.

## Configuring the Router

Enter configuration commands at the `SDLC # Config>` prompt. Follow these steps to display this prompt.

1. Enter `talk 6`, or `t 6`.
2. At the `Config>` prompt, enter the **set data-link sdlc** command. When prompted, enter the name of the interface to associate with the SDLC device.

```
Config>set data-link sdlc
Interface number [0]? 3
Config>
```

3. Next, enter the **network** command, plus the number of the SDLC interface entered earlier.

```
Config>network 3
SDLC 3 Config>
```

## Restarting the Router

When you are done configuring the router, restart it to load the new configuration. Enter **restart** at the `*` prompt and respond **yes** to the following prompt:

```
Are you sure you want to restart the gateway? (Yes or No): yes
```

When the new configuration is finished loading, the terminal displays the `*` prompt.

## Monitoring the Router

Enter monitoring commands at the `SDLC-#>` prompt. Follow these steps to display this prompt. To return to the `*` prompt at any time, press **Ctrl/P**.

1. Enter `talk 5`, or `t 5`.

```
CGW Operator Console
+
```

2. Next, enter the **network** command, and the number that identifies the interface associated with a previously configured SDLC device.

```
+ net 3
SDLC Console
SDLC-3>
```



Copyright © Digital Equipment Corporation 1996. All rights reserved.

DEC, DECnet, OpenVMS, PATHWORKS, ThinWire, VAX, VAXcluster, VMS, VT, and the DIGITAL logo are trademarks of Digital Equipment Corporation.

All other trademarks and registered trademarks are the property of their respective holders.

