

HP WBEM Providers for OpenVMS

Installation and Administrator's Guide

February 2011

This document describes how to install and administer the Web-Based Enterprise Management (WBEM) Providers software and its components.

Revision/Update Information:	This is a revised manual.
Operating System:	OpenVMS Version 8.4 for Integrity servers
Software Version:	HP WBEM Providers for OpenVMS, Version 2.2-3

**Hewlett-Packard Company
Palo Alto, California**

© Copyright 2011 Hewlett-Packard Development Company, L.P.

Confidential computer software. Valid license from HP required for possession, use or copying. Consistent with FAR 12.211 and 12.212, Commercial Computer Software, Computer Software Documentation, and Technical Data for Commercial Items are licensed to the U.S. Government under vendor's standard commercial license.

The information contained herein is subject to change without notice. The only warranties for HP products and services are set forth in the express warranty statements accompanying such products and services. Nothing herein should be construed as constituting an additional warranty. HP shall not be liable for technical or editorial errors, or omissions contained herein.

Intel and Itanium are trademarks or registered trademarks of Intel Corporation or its subsidiaries in the United States and other countries.

Windows is a U.S. registered trademark of Microsoft Corporation.

Contents

Preface	v
1 Introduction	
1.1 Overview	1-1
1.2 Features and Benefits	1-1
1.3 WBEM Providers Product Components	1-2
1.3.1 Instance Providers	1-2
1.3.2 Indication Providers	1-4
1.3.3 OpenVMS Event Monitoring Service	1-4
1.3.4 WBEM Utilization Provider Daemon	1-5
1.3.5 WBEM Set Host Parameters Daemon	1-5
1.4 HP Systems Insight Manager	1-5
1.5 Architecture on Integrity server Systems	1-5
2 Installing the WBEM Providers Software	
2.1 Prerequisites	2-1
2.2 Installing the WBEM Providers Software on an OpenVMS Integrity server	2-2
2.3 Configuring the WBEM Providers Software	2-3
2.4 Configuring WBEM Services for OpenVMS to Support HP SIM	2-5
2.5 Deconfiguring the WBEM Providers Software	2-5
2.6 Removing the WBEM Providers Software	2-8
2.7 Testing the WBEM Providers Instances	2-9
3 Administering Indications and Instances Using HP SIM	
3.1 Prerequisites for HP SIM	3-1
3.1.1 Setting the Global Protocol	3-1
3.1.2 Discovering a System	3-3
3.1.3 Identifying a System	3-4
3.2 Subscribing to Indications (Events)	3-7
3.3 Unsubscribing to Indications (Events)	3-11
3.4 Viewing Indications (Events)	3-13
3.5 Viewing Instances	3-16

Glossary

Index

Figures

1-1	WBEM Providers on Integrity server Systems	1-6
3-1	Protocol Settings	3-2
3-2	Global Protocol Settings	3-2
3-3	Discovery Option	3-3
3-4	Discovery Page	3-4
3-5	System Protocol Settings link	3-5
3-6	System Protocol Settings	3-5
3-7	Identify Systems	3-6
3-8	Task Results	3-7
3-9	Subscribe to WBEM Events	3-8
3-10	Subscribe to WBEM Events Page - Verifying target system	3-9
3-11	Subscribe to WBEM Events Page - Task Confirmation	3-9
3-12	Subscribe to WBEM Events Page - Task Results	3-10
3-13	Unsubscribe to WBEM Events Page	3-11
3-14	Unsubscribe to WBEM Events Page - Verifying target systems	3-12
3-15	Unsubscribe to WBEM Events Page - Task confirmation	3-12
3-16	Unsubscribe to WBEM Events Page - Task Results	3-13
3-17	Events list	3-14
3-18	Event Details	3-14
3-19	Printable Event Details	3-15
3-20	System Page	3-16
3-21	Properties Window	3-16
3-22	Status Tab	3-17
3-23	Status	3-17
3-24	Configuration Tab	3-18
3-25	Configuration	3-18

Tables

1-1	Instance Providers	1-2
1-2	Indication Providers	1-4

Preface

About This Document

This document describes how to install and administer the Web-Based Enterprise Management Providers, herein after referred to as WBEM Providers software.

Document updates may be issued between editions to correct errors or to document product changes.

Intended Audience

This document is intended for system administrators responsible for installing and managing remote systems using the WBEM Providers software.

This document is also intended for users working on the client systems. Administrators and users are expected to have knowledge of operating system concepts and commands.

This document is not a tutorial.

Document Structure

HP WBEM Providers Installation and Administrator's Guide is organized as follows:

Chapter 1	Introduction Introduces the WBEM Providers software. It also discusses the features and benefits of this software, and the architecture of the WBEM Providers software.
Chapter 2	Installing the WBEM Providers Software Describes how to install, configure, deconfigure, and remove the WBEM Providers software.
Chapter 3	Administering Indications and Instances Using HP SIM Describes how to use the HP Systems Insight Manager (HP SIM) Graphical User Interface (GUI) to administer indications and view instances on remote systems.

Related Information

The WBEM Providers product documentation is available at the following website:

<http://h71000.www7.hp.com/doc/wbem.html>

The following documents support this version of the WBEM Providers for OpenVMS software:

- HP WBEM Providers Release Notes
- HP WBEM Providers Installation and Administrator's Guide
- HP WBEM Providers Data Sheets

- HP WBEM Providers Events List

Reader's Comments

HP welcomes your comments on this manual.

Include the document title, manufacturing part number, and any comment, error found, in this document. Also, include what we did right, so we can incorporate it into other documents.

Send your comments or suggestions to openvmsdoc@hp.com.

Conventions

The following conventions are used in this manual:

Ctrl/x	A sequence such as Ctrl/x indicates that you must press and hold the key labeled Ctrl while you press another key or a pointing device button.
...	A horizontal ellipsis in examples indicates one of the following possibilities: <ul style="list-style-type: none"> • Additional optional arguments in a statement have been omitted. • The preceding item or items can be repeated one or more times. • Additional parameters, values, or other information can be entered.
Monospace text	Monospace type indicates code examples and interactive screen displays. In the C programming language, monospace type in text identifies the following elements: keywords, the names of independently compiled external functions and files, syntax summaries, and references to variables or identifiers introduced in an example.
-	A hyphen at the end of a command format description, command line, or code line indicates that the command or statement continues on the following line.
<i>italic text</i>	Italic text indicates important information, complete titles of manuals, or variables. Variables include information that varies in system output (Internal error <i>number</i>), in command lines (<i>/PRODUCER=name</i>), and in command parameters in text (where <i>dd</i> represents the predefined code for the device type).
UPPERCASE	Uppercase text indicates the name of a routine, the name of a file, the name of a file protection code, or the abbreviation for a system privilege.

- () In command format descriptions, parentheses indicate that you must enclose the options in parentheses if you specify more than one.
- [] In command format descriptions, brackets indicate optional elements. You can choose one, none, or all of the options. (Brackets must be included, however, in the syntax of a directory name in an OpenVMS file specification or in the syntax of a substring specification in an assignment statement.)
- \$ **user input** User input is shown in bold.
- \$ The dollar sign is used to indicate the DCL prompt on OpenVMS systems.

This chapter introduces the WBEM Providers software and the tools that this software includes. It also discusses the features and benefits of the WBEM Providers software, and their architecture on Integrity server systems.

This chapter addresses the following topics:

- Overview
- Features and Benefits
- WBEM Providers Product Components
- HP Systems Insight Manager
- Architecture on Integrity Server Systems

1.1 Overview

The WBEM Providers software is a collection of tools that enables you to monitor the health of HP servers running HP OpenVMS. This software retrieves information about hardware devices such as CPU, memory, power supply, and cooling devices. It operates within the WBEM environment.

1.2 Features and Benefits

On request, the WBEM Providers software queries property information about a hardware device on a local or remote system. It offers the following features and benefits:

- Displays information on standards-compliant graphical and command-line system management applications, such as HP SIM.
- Operates within the WBEM environment.
- Enables you to view and administer the WBEM indications.
- Enables you to view the WBEM instances.

Introduction

1.3 Wbem Providers Product Components

1.3 Wbem Providers Product Components

The Wbem Providers software comprises instance providers, indication providers and supporting daemons. This section describes these components.

1.3.1 Instance Providers

Table 1–1 lists the instance providers.

Table 1–1 Instance Providers

Instance Provider	Description
CPU	<p>The CPU Instance Provider retrieves the following types of information:</p> <ul style="list-style-type: none">• Logical processor information, such as the following:<ul style="list-style-type: none">– Current clock speed– Processor family– Processor status information, including configuration and deconfiguration, failure status, and active and inactive status– Load percentage• Physical processor chip information, such as chip revisions and architecture revisions• Location details, such as the following:<ul style="list-style-type: none">– Location attributes such as cabinet number, cell number, slot number, and so on. Instance providers display or retrieve information only for the filled slots– Processor IDs
Memory	<p>The Memory Instance Provider retrieves the following types of information:</p> <ul style="list-style-type: none">• Memory slot information• Memory module information, such as the following:<ul style="list-style-type: none">– Serial number– Part number– Memory capacity– Module form factor– Module status (for example, configuration status and failure status)

(continued on next page)

1.3 WBEM Providers Product Components

Table 1–1 (Cont.) Instance Providers

Instance Provider	Description
Environmental	<p>The Environmental Instance Provider retrieves information about the following hardware components:</p> <ul style="list-style-type: none"> • Fans • Power supply • Bulk power supply • AC input lines <p>They also retrieve consolidated health of cooling, and power subsystems on HP servers.</p> <p>On the Blade systems, the cooling and power information is not displayed, as the cooling and power devices are connected to enclosure and not to individual blades.</p>
Computer System Chassis Instance Provider	Retrieves the HP base server physical asset information of the system from HP Integrity servers. The provider retrieves properties such as the serial number, product ID, and Logical Universally Unique ID (UUID).
Firmware Revision	The Firmware Revision Instance Provider retrieves firmware revision information for firmwares present on the managed system and their related details.
Management Processor (MP)	The MP Instance Provider retrieves information about the Management Processor of the managed system.
Enclosure/Blade OA	The Enclosure Instance Provider retrieves information about the Rack/Enclosure and the blade on an Integrity server blade system.
Utilization	<p>Retrieves information about the CPU, memory, disk and network utilization.</p> <p>OPENVMS_UTILD is a process that runs in the background, and it is required by the utilization provider.</p>
LAN	Retrieves the consolidated status of the Ethernet interfaces.
VM	Retrieves the information about the underlying Integrity VM Host on which the OpenVMS guest is hosted.

Note

The CPU Instance Provider, Memory Instance Provider, Environmental Instance Provider, Management Processor Provider and Enclosure/Blade OA Instance Provider are not supported on HP VM OpenVMS Guest, since the guest runs in a virtual system. For information about hardware devices present on the underlying VM host, use WBEM Providers running on the VM host operating system.

Introduction

1.3 WBEM Providers Product Components

1.3.2 Indication Providers

Table 1–2 lists the indication providers.

Table 1–2 Indication Providers

Indication Provider	Description
EMS Wrapper Provider	<p>The EMS Wrapper Provider performs the following tasks:</p> <ul style="list-style-type: none">• Converts hardware events captured by the OpenVMS EMS component into WBEM indications.• Common Information Model Object Manager (CIMOM) is a component of WBEM that manages the interaction between the providers and other modules in the WBEM environment. CIMOM manages CIM objects. It receives and processes CIM operation requests and issues responses. <p>The EMS Wrapper Provider reports the WBEM indications to the CIMOM. Using a management application, such as HP SIM, you can subscribe to and receive OpenVMS EMS events generated on a remote system.</p>
LAN Indication Provider	<p>LAN Indication Provider delivers indications for events that occur on Ethernet interfaces. Client applications can subscribe and start receiving indications based on events generated by Ethernet interfaces. Supported indications are:</p> <ul style="list-style-type: none">• Link down for unknown reasons• Link up

Note

The terms *events* and *indications* are used interchangeably.

1.3.3 OpenVMS Event Monitoring Service

OpenVMS Event Monitoring Service, herein after referred to as OpenVMS EMS is a component that is included in the WBEM Providers software. This component monitors and captures the hardware events and saves them in an OpenVMS index file. OPENVMS_EMS process gathers the events for the EMS Wrapper Provider. The EMS Wrapper Provider queries the index file and wraps these hardware indications (events).

OpenVMS EMS supports the following types of hardware monitors:

- IA64 Core Hardware Monitor (Events)
- IPMI Forward Progress Log Monitor (Events)

For a list of events that can be generated on OpenVMS, see HP WBEM Providers Events List available at:

<http://h71000.www7.hp.com/doc/wbem.html>

1.3 WBEM Providers Product Components

1.3.4 WBEM Utilization Provider Daemon

The WBEM Utilization Provider Daemon (OPENVMS_UTILD) is a process that runs in the background to gather and record utilization of the CPU, Memory, LAN and disk resources on the system. It is required by the Utilization Provider.

1.3.5 WBEM Set Host Parameters Daemon

The WBEM Set Host Parameters Daemon (WBEMPROV\$HOST_P) is a process that runs in the background, and sets host-related parameters (host name, Operating System name & version, and System Management Homepage URL) on the Integrated Lights-Out (iLO) or Management Processor (MP).

1.4 HP Systems Insight Manager

HP Systems Insight Manager (HP SIM) is the foundation for HP's unified server-storage management strategy. It is a multiple operating system and a hardware level management product. HP SIM provides the basic management features of system discovery and identification, single event view, inventory data collection, and reporting.

This software is a web-based user interface that enables you to control and monitor resources within a large environment on OpenVMS. You can use HP SIM for creating subscriptions, event handling, provisioning, and viewing the indications and instances, among many other functions, on a remote system. You must install HP SIM on the Central Management Server (CMS) run on Microsoft Windows.

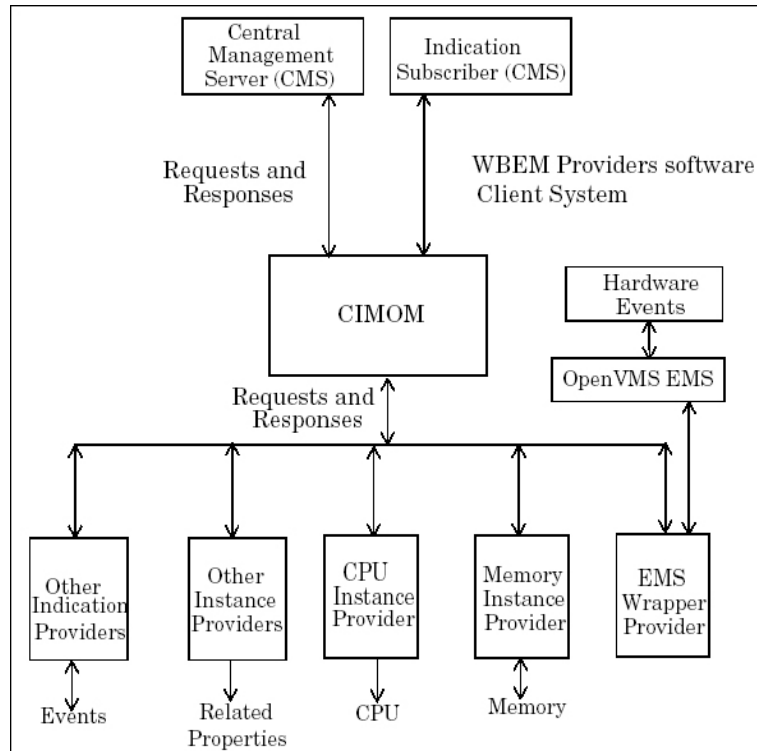
1.5 Architecture on Integrity server Systems

Figure 1–1 illustrates the architecture of the WBEM Providers software installed on an Integrity server client system. The client system is managed by the CMS.

Introduction

1.5 Architecture on Integrity server Systems

Figure 1–1 Wbem Providers on Integrity server Systems



Processing a request for information involves the following steps:

1. The CIMOM receives requests from the CMS for device information.
2. The CIMOM converts the requests to a format that is read by the WBEM Providers software and directs the requests to the appropriate provider, for example, the CPU Instance Provider.
3. The WBEM Providers software queries the associated hardware device for property information.
4. The WBEM Providers software returns the query information to the CIMOM.
5. The CIMOM conveys the responses from the provider to the CMS.

The OpenVMS EMS monitors and captures the hardware events required by OpenVMS. The EMS Wrapper Provider wraps the events and retrieves the information.

Note

Information can be viewed using HP SIM on the remote system.

Installing the WBEM Providers Software

The WBEM Providers software is installed by default with the HP OpenVMS Operating Environment (OE) media. However, at some point you may need to install the WBEM Providers software separately. This chapter describes how to install the WBEM Providers software as a standalone component on the OpenVMS operating system. It also describes how to configure and remove the WBEM Providers software. In addition, it describes how to test the WBEM Providers instances.

This chapter addresses the following topics:

- Prerequisites
- Installing the WBEM Providers Software on an OpenVMS Integrity server
- Configuring the WBEM Providers Software
- Configuring WBEM Services for OpenVMS to Support HP SIM
- Deconfiguring the WBEM Providers Software
- Removing the WBEM Providers Software
- Testing the WBEM Providers Instances

2.1 Prerequisites

Following are the prerequisites for installing the WBEM Providers software:

- HP OpenVMS Version 8.4 for Integrity servers
- HP WBEM Services for OpenVMS, Version 2.9-9
- HP TCP/IP Stack
- Latest SYS and UPDATE patches

Note

On the rx2800 i2 servers, you must have the VMS84I_UPDATE-V0500 or later update kit installed and running before installing WBEM Providers.

On the BL860c i2, BL870c i2, and BL890c i2 server blades, you must have the VMS84I_UPDATE-V0200 or later update kit installed and running before installing WBEM Providers.

Installing the WBEM Providers Software

2.1 Prerequisites

Note

The WBEM Providers kit is supported for installation only on the OpenVMS system disk. Installation of WBEM Providers kit on a non-system disk is not supported.

Note

HP recommends that you install HP SIM to remotely administer indications and instances.

2.2 Installing the WBEM Providers Software on an OpenVMS Integrity server

This section describes how to install the WBEM Providers software using the POLYCENTER Software Installation (PCSI) utility.

To install the WBEM Providers software, follow these steps:

1. Log on to the system with the SYSTEM account.
2. Ensure that the WBEM Providers software kit and manifest files are in the current directory.
3. Enter the following command at the command prompt:

```
$ PRODUCT INSTALL WBEMPROVIDERS
```

An output similar to the following is displayed. When the system asks whether you want to continue with the installation, answer YES.

```
Performing product kit validation ...
%PCSI-I-VALPASSED, validation of
_1$DGA413:[KITS.IA64.WBEMPROVIDERS]
HP-I64VMS-WBEMPROVIDERS-V0200-3-1.PCSI;1 succeeded%PCSI
```

```
The following product has been selected:
  HP I64VMS WBEMPROVIDERS V2.0-3          Layered Product
```

```
Do you want to continue? [YES]
```

```
Configuration phase starting ...
```

```
You will be asked to choose options, if any, for each selected product and for
any products that may be installed to satisfy software dependency requirements.
```

```
Configuring HP I64VMS WBEMPROVIDERS V2.0-3: HP WBEM providers for OpenVMS I64
```

```
2007 Hewlett-Packard Development Company, L.P. All rights reserved.
```

```
Hewlett Packard Company
```

```
* This product does not have any configuration options.
```

```
Execution phase starting ...
```

```
The following product will be installed to destination:
```

```
  HP I64VMS WBEMPROVIDERS V2.0-3          DISK$ORANGE-1H1:[VMS$COMMON.]
```

```
Portion done: 0%...10%...20%...30%...40%...50%...60%...70%...80%...90%...100%
```

```
The following product has been installed:
```

```
  HP I64VMS WBEMPROVIDERS V2.0-3          Layered Product
```


Installing the WBEM Providers Software

2.2 Installing the WBEM Providers Software on an OpenVMS Integrity server

The shareable images and other files are copied to the following locations:

- The shareable images are copied to `SYSS$SHARE`
- The common files are copied to `SYSS$COMMON:[WBEMPROVIDERS]`
- The Managed Object Format (MOF) files are copied to `SYSS$COMMON:[WBEMPROVIDERS.MOF]`
- The documentation files are available for download at:
`http://h71000.www7.hp.com/doc/wbem.html`
- The configuration and deconfiguration command procedure files are copied to `SYSS$COMMON:[WBEMPROVIDERS]`

2.3 Configuring the WBEM Providers Software

After the installation of the WBEM Providers software for OpenVMS, to configure the WBEM Providers software, follow these steps:

1. Log on to the system with the `SYSTEM` account, if you are have logged on using a different account.
2. To define the WBEM Services logicals, enter the following command:
`$ @SYSS$COMMON:[WBEM_SERVICES]WBEM_SERVICES$DEFINE_COMMANDS.COM`
3. Ensure that the CIM Server is running and verify the list of Providers installed by entering the following command:

```
$ CIMPROVIDER -L -S
```

An output similar to the following is displayed:

MODULE	STATUS
OperatingSystemModule	OK
ComputerSystemModule	OK
ProcessModule	OK
IPProviderModule	OK

4. To configure the WBEM Providers software, enter the following command:

```
$ @SYSS$COMMON:[WBEMPROVIDERS]WBEMPROVIDERS$CONFIGURE.COM
```

Enter the "Primary Owner name" and "Primary owner contact" when prompted.

If you want to change the "Primary Owner name" and "Primary owner contact", edit the `SYSS$SPECIFIC:[WBEMPROVIDERS]WBEMPROVIDERS$LOGICALS.COM` and change the "WBEM_PRIMARY_OWNER" and "WBEM_PRIMARY_OWNER_CONTACT" logical definitions appropriately.

The configuration process takes a few minutes to complete. An output similar to the following is displayed:

Installing the WBEM Providers Software

2.3 Configuring the WBEM Providers Software

```
%WBEMPROVIDERS-I-STARTING, Info:Starting WBEMPROVIDERS Configuration.
Enter Primary Owner name of the system: system
Enter Primary owner contact information: 25166235
%WBEMPROVIDERS-I-CONTINUECONFIG, Info:configuration of EventIndicationConsumerModule...
%WBEMPROVIDERS-I-CONTINUECONFIG, Info:configuration of EMSWrapperProviderModule...
%WBEMPROVIDERS-I-CONTINUECONFIG, Info:configuration of HPVMSLANIndicationProviderModule...
%WBEMPROVIDERS-I-CONTINUECONFIG, Info:configuration of StateChangeIndicationProviderModule...
%WBEMPROVIDERS-I-CONTINUECONFIG, Info:configuration of ChassisProviderModule...
%WBEMPROVIDERS-I-CONTINUECONFIG, Info:configuration of cpuprovidermodule...
%WBEMPROVIDERS-I-CONTINUECONFIG, Info:configuration of MemoryModule...
%WBEMPROVIDERS-I-CONTINUECONFIG, Info:configuration of FirmwareRevisionProviderModule...
%WBEMPROVIDERS-I-CONTINUECONFIG, Info:configuration of MPPProviderModule...
%WBEMPROVIDERS-I-CONTINUECONFIG, Info:configuration of EnclosureProviderModule...
%WBEMPROVIDERS-I-CONTINUECONFIG, Info:configuration of HPHealthStateProviderModule...
%WBEMPROVIDERS-I-CONTINUECONFIG, Info:configuration of HPVMSLANProviderModule...
%WBEMPROVIDERS-I-CONTINUECONFIG, Info:configuration of HPVMSLANCSPProviderModule...
%WBEMPROVIDERS-I-CONTINUECONFIG, Info:configuration of CSChassisProviderModule...
%WBEMPROVIDERS-I-CONTINUECONFIG, Info:configuration of HPVMProviderModule...
%WBEMPROVIDERS-I-CONTINUECONFIG, Info:configuration of HP_UtilizationProviderModule...
%WBEMPROVIDERS-I-STARTING , Info:Starting OPENVMS_UTILD Process.
%RUN-S-PROC_ID, identification of created process is 21A0B046
%WBEMPROVIDERS-I-WAIT, Info:Inventory is not ready..! Waiting for 2 Minutes
%WBEMPROVIDERS-I-STARTING , Info:Starting OPENVMS_EMS Process.
%RUN-S-PROC_ID, identification of created process is 21A0B047
%WBEMPROVIDERS-I-STARTING , Info:Starting WBEMPROV$HOST_P Process.
%RUN-S-PROC_ID, identification of created process is 21A0B048
%WBEMPROVIDERS-I-PROVCONFIG, Info:Completed configuration of WBEMPROVIDERS.
```

This command procedure registers the WBEM Providers software with the CIM Server and copies the node specific files to `SYSS$SPECIFIC:[WBEMPROVIDERS]`

5. Verify the list of providers installed and their status by entering the following command:

```
$ CIMPROVIDER -L -S
```

An output similar to the following is displayed along with the WBEM Services providers:

MODULE	STATUS
OperatingSystemModule	OK
ComputerSystemModule	OK
ProcessModule	OK
IPProviderModule	OK
EventIndicationConsumerModule	OK
EMSWrapperProviderModule	OK
HPVMSLANIndicationProviderModule	OK
StateChangeIndicationProviderModule	OK
ChassisProviderModule	OK
cpuprovidermodule	OK
MemoryModule	OK
FirmwareRevisionProviderModule	OK
MPPProviderModule	OK
EnclosureProviderModule	OK
HPHealthStateProviderModule	OK
HPVMSLANProviderModule	OK
HPVMSLANCSPProviderModule	OK
CSChassisProviderModule	OK
HPVMProviderModule	OK
HP_UtilizationProviderModule	OK

Installing the WBEM Providers Software

2.4 Configuring WBEM Services for OpenVMS to Support HP SIM

2.4 Configuring WBEM Services for OpenVMS to Support HP SIM

For HP SIM to discover an OpenVMS system, follow these steps to configure WBEM Services for OpenVMS to support HP SIM before discovering a system:

1. Log on to the system with the SYSTEM account, if you have logged on using a different account.
2. To define the WBEM Services logicals, enter the following command:

```
$ @SYS$COMMON:[WBEM_SERVICES]WBEM_SERVICES$DEFINE_COMMANDS.COM
```

3. Add the username that you want to use in HP SIM to access the system, by entering the following command:

```
$ CIMUSER -A -U "<username>"
```

Where: *<username>* is an user account on the OpenVMS system, which must be provided again while setting the Global Protocol Settings on HP SIM.

For example,

```
$ CIMUSER -A -U "system"
```

Ensure that the user name is case sensitive. The same name must be provided in the HP SIM protocol settings. Executing this command prompts you to enter the password for the *<username>* on the OpenVMS system. Enter the password.

Note

Use the command `CIMUSER -R -U <username>` to remove the added Cimuser. For more information about Cimuser commands, enter the `CIMUSER --HELP` command.

2.5 Deconfiguring the WBEM Providers Software

To deconfigure the WBEM Providers software, follow these steps:

1. Log on to the system with the SYSTEM account, if you have logged on using a different account.
2. To define the WBEM Services logicals, enter the following command:

```
$ @SYS$COMMON:[WBEM_SERVICES]WBEM_SERVICES$DEFINE_COMMANDS.COM
```

3. Ensure that the CIM Server is running, and verify the list of Providers installed by entering the following command:

```
$ CIMPROVIDER -L -S
```

An output similar to the following is displayed:

Installing the WBEM Providers Software

2.5 Deconfiguring the WBEM Providers Software

MODULE	STATUS
OperatingSystemModule	OK
ComputerSystemModule	OK
ProcessModule	OK
IPProviderModule	OK
EventIndicationConsumerModule	OK
EMSWrapperProviderModule	OK
HPVMSLANIndicationProviderModule	OK
StateChangeIndicationProviderModule	OK
ChassisProviderModule	OK
cpuprovidermodule	OK
MemoryModule	OK
FirmwareRevisionProviderModule	OK
MPPProviderModule	OK
EnclosureProviderModule	OK
HPHealthStateProviderModule	OK
HPVMSLANProviderModule	OK
HPVMSLANCSProviderModule	OK
CSChassisProviderModule	OK
HPVMPProviderModule	OK
HP_UtilizationProviderModule	OK

4. To deconfigure the WBEM Providers software, enter the following command:

```
$ @SYS$COMMON:[WBEMPROVIDERS]WBEMPROVIDERS$DECONFIGURE.COM
```

The deconfiguration process displays the following sample output and prompts you to remove the files. Answer YES if you want to completely remove the product specific files. Answer NO if you intend to upgrade to a higher version of the WBEM Providers software.

This process also unregisters the WBEM Providers software.

```
%WBEMPROVIDERS-I-PROVDECONFIG, Info:De-configuration procedure for WBEM Providers.
OperatingSystem Information
  Host: orange
  Name: OpenVMS
  Version: V8.4
  UserLicense: Unlimited user license
  Number of Users: 2 users
  Number of Processes: 46 processes
  OSCapability: 64 bit
  LastBootTime: Jul 30, 2009 9:57:55 (-0500)
  LocalDateTime: Aug 20, 2009 0:31:34 (-0500)
  SystemUpTime: 1780419 seconds = 20 days, 14 hrs, 33 mins, 39 secs
Deconfiguration is going to remove all the Providers and Restart Cimserver.
Do you want to continue?(Y/N) [Y]:
%WBEMPROVIDERS-I-STOP, Info: Stopping the OpenVMS_EMS process
%WBEMPROVIDERS-I-STOP, Info: Stopping the WBEMPROV$HOST_P process
%WBEMPROVIDERS-I-DEL, Info:Deleting the Obsolete files from SYS$SPECIFIC:[WBEMPROVIDERS] directory
%WBEMPROVIDERS-I-DECONFPROV, Info:De-configuration of HPHealthStateProviderModule...
Disabling provider module...
Provider module disabled successfully.
Deleting provider module...
Provider module deleted successfully.
%WBEMPROVIDERS-I-DECONFPROV, Info:De-configuration of cpuprovidermodule...
Disabling provider module...
Provider module disabled successfully.
Deleting provider module...
Provider module deleted successfully.
%WBEMPROVIDERS-I-DECONFPROV, Info:De-configuration of MemoryModule...
Disabling provider module...
Provider module disabled successfully.
Deleting provider module...
Provider module deleted successfully.
%WBEMPROVIDERS-I-DECONFPROV, Info:De-configuration of ChassisProviderModule...
```

Installing the WBEM Providers Software

2.5 Deconfiguring the WBEM Providers Software

```
Disabling provider module...
Provider module disabled successfully.
Deleting provider module...
Provider module deleted successfully.
%WBEMPROVIDERS-I-DECONFPROV, Info:De-configuration of FirmwareRevisionProviderModule...
Disabling provider module...
Provider module disabled successfully.
Deleting provider module...
Provider module deleted successfully.
%WBEMPROVIDERS-I-DECONFPROV, Info:De-configuration of EventIndicationConsumerModule...
Disabling provider module...
Provider module disabled successfully.
Deleting provider module...
Provider module deleted successfully.
%WBEMPROVIDERS-I-DECONFPROV, Info:De-configuration of StateChangeIndicationProviderModule...
Disabling provider module...
Provider module disabled successfully.
Deleting provider module...
Provider module deleted successfully.
%WBEMPROVIDERS-I-DECONFPROV, Info:De-configuration of EMSWrapperProviderModule...
Disabling provider module...
Provider module disabled successfully.
Deleting provider module...
Provider module deleted successfully.
%WBEMPROVIDERS-I-DECONFPROV, Info:De-configuration of MPPProviderModule...
Disabling provider module...
Provider module disabled successfully.
Deleting provider module...
Provider module deleted successfully.
%WBEMPROVIDERS-I-DECONFPROV, Info:De-configuration of EnclosureProviderModule...
Disabling provider module...
Provider module disabled successfully.
Deleting provider module...
Provider module deleted successfully.
%WBEMPROVIDERS-I-DECONFPROV, Info:De-configuration of HPVMSLANProviderModule...
Disabling provider module...
Provider module disabled successfully.
Deleting provider module...
Provider module deleted successfully.
%WBEMPROVIDERS-I-DECONFPROV, Info:De-configuration of HPVMSLANCSProviderModule...
Disabling provider module...
Provider module disabled successfully.
Deleting provider module...
Provider module deleted successfully.
%WBEMPROVIDERS-I-DECONFPROV, Info:De-configuration of HPVMSLANIndicationProviderModule...
Disabling provider module...
Provider module disabled successfully.
Deleting provider module...
Provider module deleted successfully.
%WBEMPROVIDERS-I-DECONFPROV, Info:De-configuration of CSChassisProviderModule...
Disabling provider module...
Provider module disabled successfully.
Deleting provider module...
Provider module deleted successfully.
%WBEMPROVIDERS-I-DECONFPROV, Info:De-configuration of HPVMPProviderModule...
Disabling provider module...
Provider module disabled successfully.
Deleting provider module...
Provider module deleted successfully.
%WBEMPROVIDERS-I-DECONFPROV, Info:De-configuration of HP_UtilizationProviderModule...
Disabling provider module...
Provider module disabled successfully.
Deleting provider module...
Provider module deleted successfully.
%WBEMPROVIDERS-I-DEL, Info:Deleting Log/Temporary files generated by WBEMProviders
```

Installing the WBEM Providers Software

2.5 Deconfiguring the WBEM Providers Software

```
%WBEMCIM-I-SHUTDOWN, Shutting down WBEM Services for OpenVMS...
%WBEMCIM-I-SHUTDOWNCS, Shutting down CIMServer.exe...
CIM Server stopped.
%WBEMCIM-I-SERVERWAIT, Waiting for CIMServer to shut down. 60 seconds remaining...
%WBEMCIM-S-STARTSTOP, CIMServer has stopped.
%WBEMCIM-I-SHUTDOWNCSUCCESS, Shutdown of CIMServer.exe successful. sts=%X00000001.
%RUN-S-PROC_ID, identification of created process is 21A0B070
%WBEMCIM-I-SERVERWAIT, Waiting for CIMServer to start. 180 seconds remaining...
%WBEMCIM-S-STARTSTOP, CIMServer successfully started.
OperatingSystem Information
  Host: orange
  Name: OpenVMS
  Version: V8.4
  UserLicense: Unlimited user license
  Number of Users: 2 users
  Number of Processes: 43 processes
  OSCapability: 64 bit
  LastBootTime: Jul 30, 2009 9:57:55 (-0500)
  LocalDateTime: Aug 20, 2009 0:35:13 (-0500)
  SystemUpTime: 1780638 seconds = 20 days, 14 hrs, 37 mins, 18 secs
%WBEMPROVIDERS-I-PROVDECONFIG, Info:De-configuration of WBEMProviders successful.
```

5. To ensure that the WBEM Providers software is unregistered, query the CIM server by entering the following command:

```
$ CIMPROVIDER -L -S
```

The providers that were displayed earlier will not be displayed now.

6. To ensure that all the shareable images are unloaded from the CIM Server image, restart the CIM Server after deconfiguration by entering the following command:

```
$ @SYS$STARTUP:WBEM_SERVICES$SHUTDOWN.COM
```

Wait for few minutes for the process to complete, and enter the following command:

```
$ @SYS$STARTUP:WBEM_SERVICES$STARTUP.COM
```

2.6 Removing the WBEM Providers Software

To remove the WBEM Providers software, complete the deconfiguration steps described in the Section 2.5 "Deconfiguring the WBEM Providers Software" and enter the following command at the command prompt:

```
$ PRODUCT REMOVE WBEMPROVIDERS
```

An output similar to the following is displayed:

```
The following product has been selected:
  HP I64VMS WBEMPROVIDERS V2.0-3      Layered Product

Do you want to continue? [YES]

The following product will be removed from destination:
  HP I64VMS WBEMPROVIDERS V2.0-3      DISK$ORANGE-1H1:[VMS$COMMON.]

Portion done: 0%...10%...20%...30%...40%...50%...60%...70%...80%...90%...100%

The following product has been removed:
  HP I64VMS WBEMPROVIDERS V2.0-3      Layered Product
```

2.7 Testing the WBEM Providers Instances

To test the WBEM Providers instances, follow these steps:

1. To define the WBEM Services logicals, enter the following command:

```
$ @SYS$COMMON:[WBEM_SERVICES]WBEM_SERVICES$DEFINE_COMMANDS.COM
```

2. A set of XML files are provided in the SYS\$COMMON:[WBEMPROVIDERS.TEST] directory that can be used to test the WBEM Providers software. The name of the XML file indicates the Provider that you want to test. Enter the following commands to generate instances using the WBEMEXEC request and the XML file:

```
$ SET DEF SYS$COMMON:[WBEMPROVIDERS.TEST]  
$ WBEMEXEC <INSTANCES.XML>
```

For example,

```
$ SET DEF SYS$COMMON:[WBEMPROVIDERS.TEST]  
$ WBEMEXEC CS_ENUMERATE_INSTANCES.XML ! Enumerates instances of the CS provider  
$ WBEMEXEC CS_ENUMERATE_INSTANCE_NAMES.XML ! Enumerates instance names of the  
! CS Provider
```

Administering Indications and Instances Using HP SIM

This chapter describes how to administer the WBEM Providers software using HP SIM.

Note

You can perform similar tasks using other management applications that are compliant with the Common Information Model (CIM) schema of the Distributed Management Task Force (DMTF).

This chapter addresses the following topics:

- Prerequisites for HP SIM
- Subscribing to Indications (Events)
- Unsubscribing to Indications (Events)
- Viewing Indications (Events)
- Viewing Instances

3.1 Prerequisites for HP SIM

To use HP SIM to administer and view indications and instances, ensure that the following prerequisites are satisfied:

- Setting the Global Protocol
- Discovering a System
- Identifying a System

3.1.1 Setting the Global Protocol

To set the Global Protocol Settings using HP SIM, follow these steps:

1. On OpenVMS system, complete the steps described in the Section 2.4 "Configuring WBEM Services for OpenVMS to Support HP SIM".
2. Enter the following URL to launch HP SIM on the browser:

`http://<system name>:<port number>/`

The system name is the name of CMS.

For example, `http://abc.com:280/`

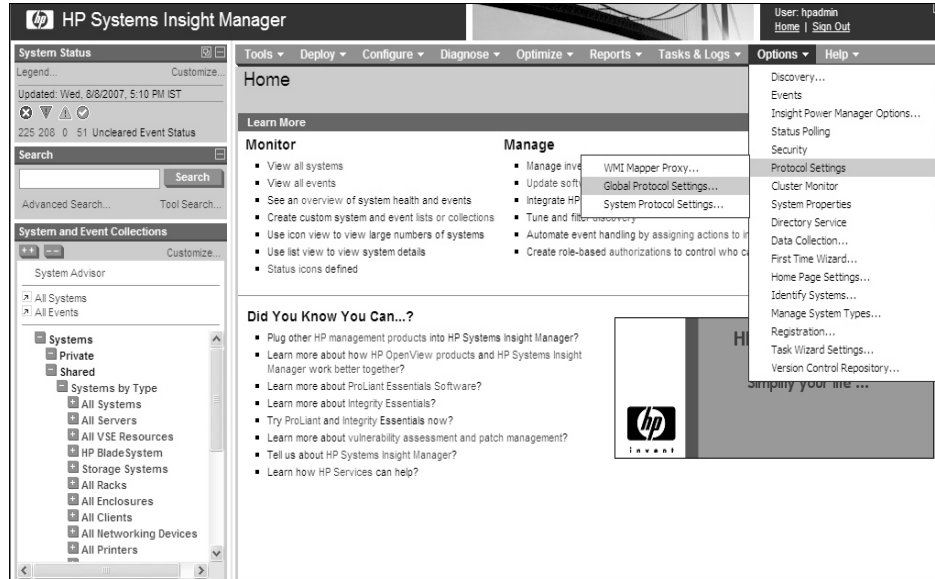
The HP SIM home page is launched.

Administering Indications and Instances Using HP SIM

3.1 Prerequisites for HP SIM

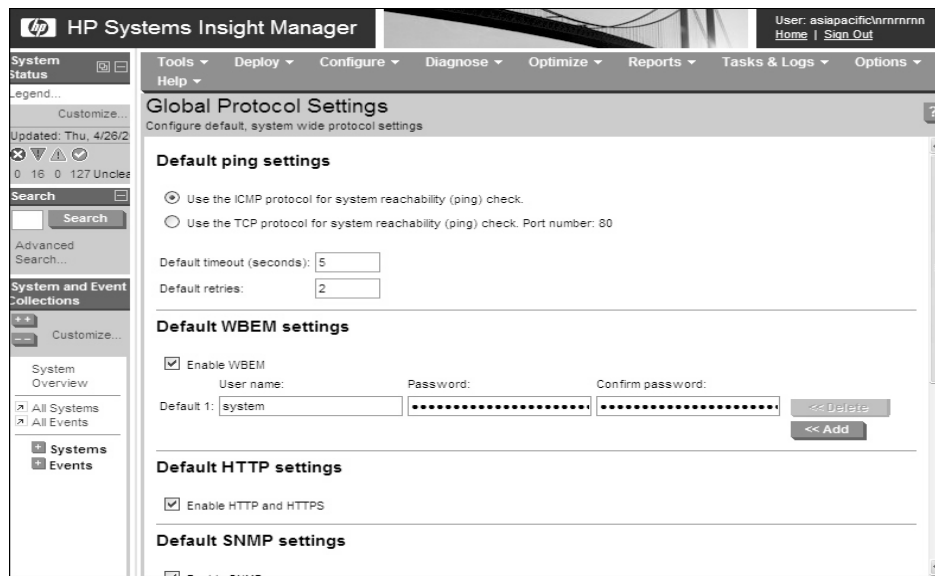
3. To set the global protocol, select **Options**→**Protocol Settings**→**Global Protocol Settings**, as shown in Figure 3–1.

Figure 3–1 Protocol Settings



The Global Protocol Settings window is displayed, as shown in Figure 3–2.

Figure 3–2 Global Protocol Settings



4. Under the Default WBEM settings section, select **Enable WBEM**, as shown in Figure 3–2.

Administering Indications and Instances Using HP SIM

3.1 Prerequisites for HP SIM

5. Add the users and their associated password that were added while configuring WBEM Services for HP SIM on OpenVMS. Click **OK** to save the settings.

Note

For more information, see the *HP Systems Insight Manager Installation and User's Guide*:

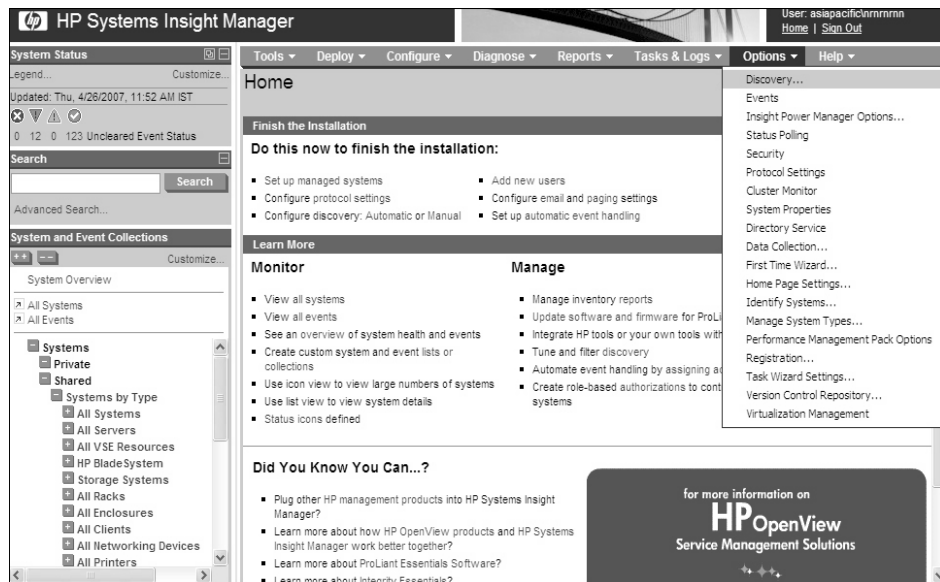
<http://docs.hp.com/en/netsys.html>

3.1.2 Discovering a System

To discover an OpenVMS system using HP SIM, follow these steps:

1. Select **Options** ->**Discovery** in the HP SIM home page, as shown in Figure 3-3.

Figure 3-3 Discovery Option

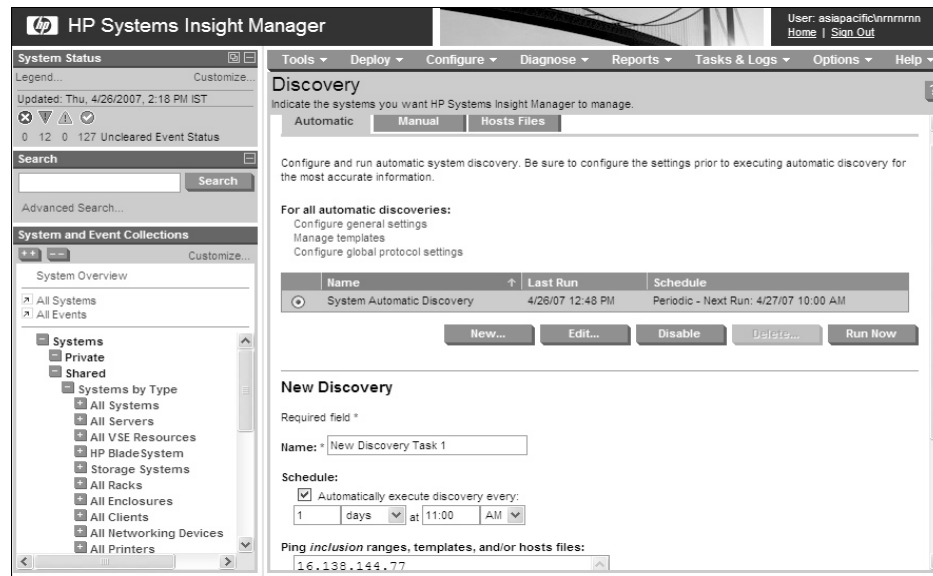


Administering Indications and Instances Using HP SIM

3.1 Prerequisites for HP SIM

The Discovery page is displayed, as shown in Figure 3–4.

Figure 3–4 Discovery Page



2. Click **New** to add a new system, as shown in Figure 3–4. Enter the IP address, and click **OK** to save the settings.
3. Or click **Edit** to modify the discovered system settings.
4. Click **Run Now**.

Note

- Before discovering a partition of a cell-based system in HP SIM, nPar provider has to be configured and running in the partition. For more information about Configuring nPar provider, see the HP Instant Capacity documentation:
www.hp.com/go/hp-icap-docs
- For more information, see the *HP Systems Insight Manager Installation and User's Guide*:
<http://docs.hp.com/en/netsys.html>

3.1.3 Identifying a System

Identify a system on HP SIM, if the system has not been discovered properly, or if the Global Protocol Settings are different from the System Protocol Settings. To identify a system, follow these steps:

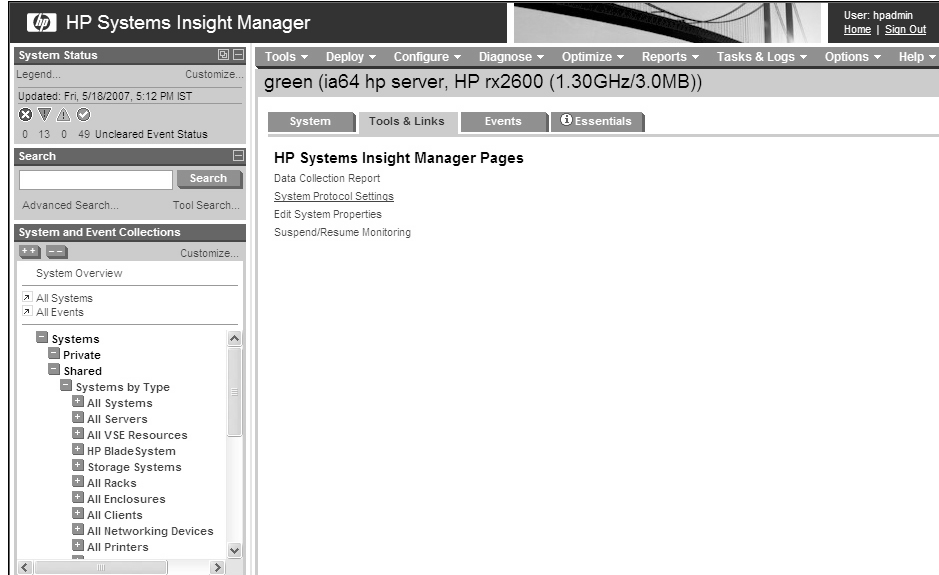
1. In the left pane of the HP SIM page, from the All Systems option, select the required OpenVMS system to open the Systems page.

Administering Indications and Instances Using HP SIM

3.1 Prerequisites for HP SIM

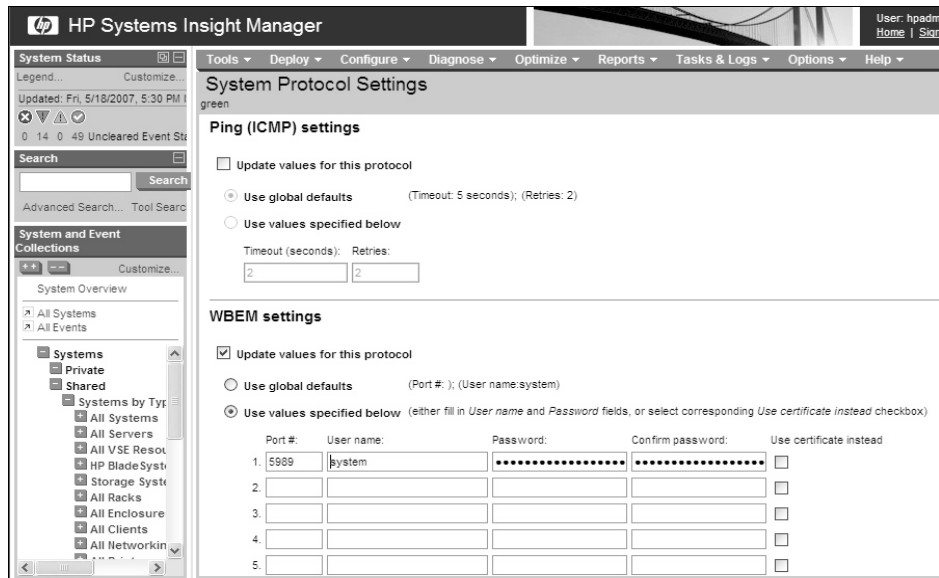
2. Click **Tools & Links**, and click the **System Protocol Settings** link, as shown in Figure 3–5.

Figure 3–5 System Protocol Settings link



The System Protocol Settings page is displayed, as shown in Figure 3–6.

Figure 3–6 System Protocol Settings



3. Under the WBEM settings section, select **Updated values for this protocol**, as shown in Figure 3–6.

Select **Use values specified below**, and enter the required user credentials, if the system protocol settings are different from the global protocol settings.

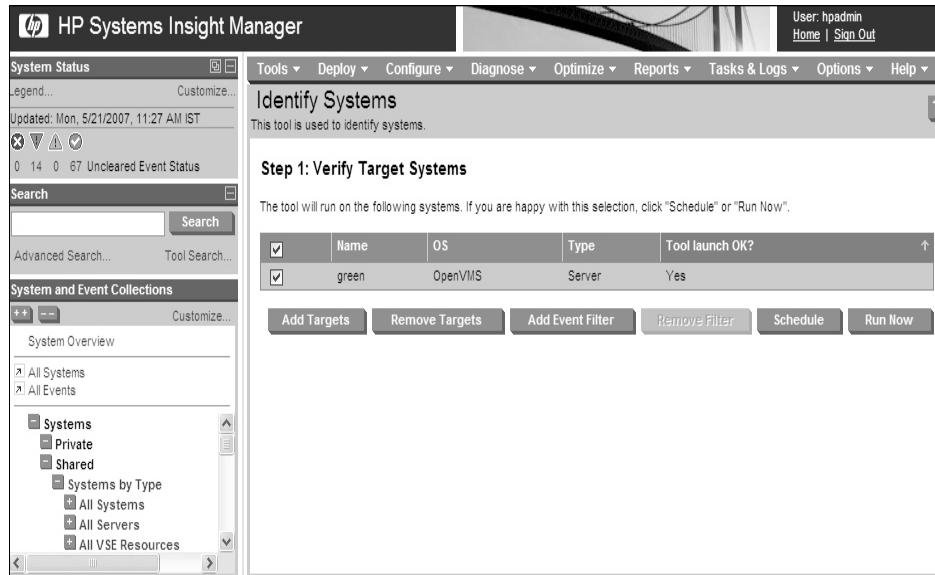
Click **OK** to save the settings.

Administering Indications and Instances Using HP SIM

3.1 Prerequisites for HP SIM

4. Select **Options**→**Identify Systems** to identify the system.
5. Select the required system, and click **Run Now** to verify the target system, as shown in Figure 3–7.

Figure 3–7 Identify Systems

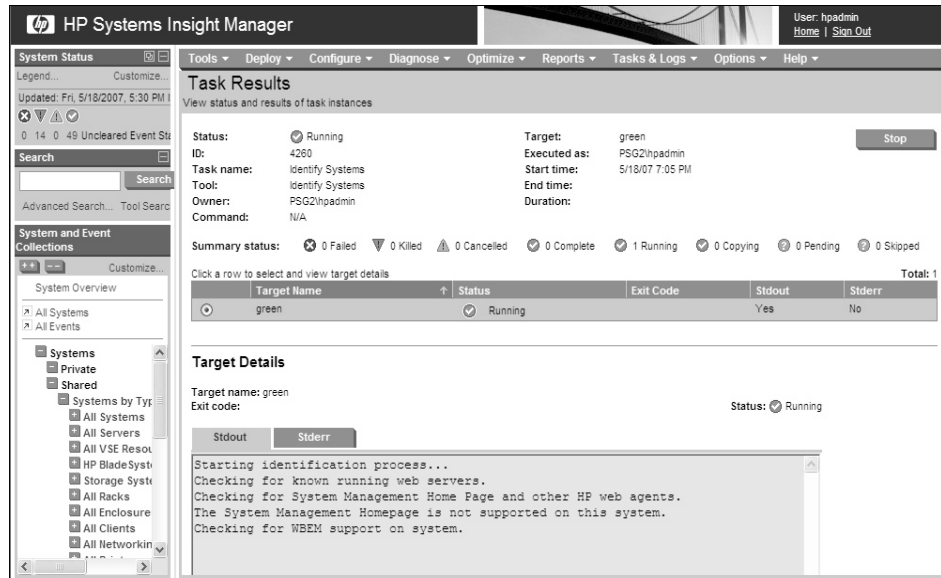


Administering Indications and Instances Using HP SIM

3.1 Prerequisites for HP SIM

The Task Results page is displayed, as shown in Figure 3–8.

Figure 3–8 Task Results



Note

For more information, see the *HP Systems Insight Manager Installation and User's Guide*:

<http://docs.hp.com/en/netsys.html>

3.2 Subscribing to Indications (Events)

When creating subscriptions on the CMS using HP SIM, indications are delivered to the CMS whenever an event occurs on the managed system.

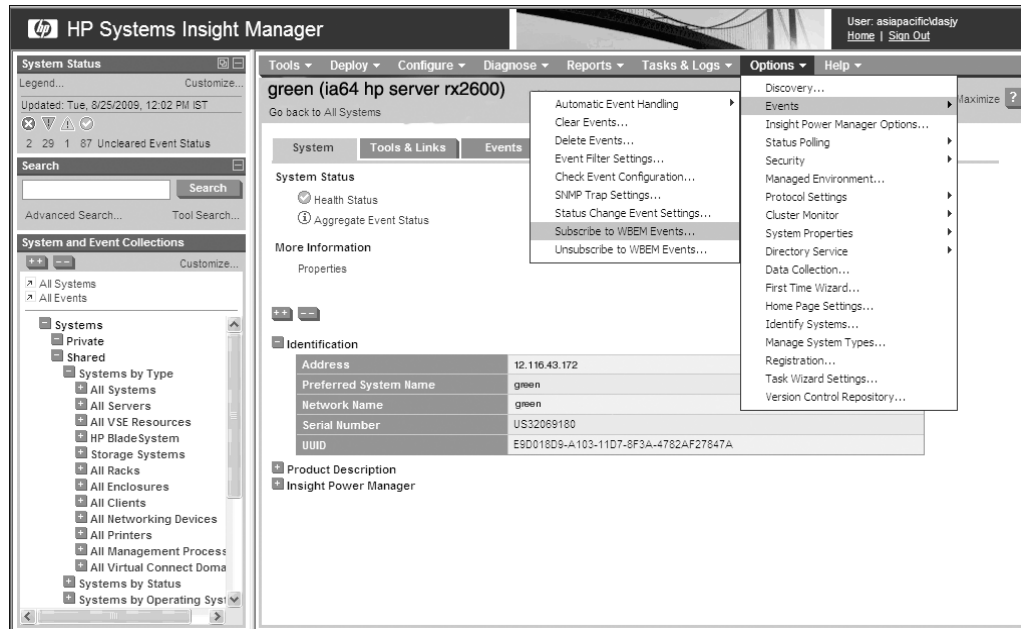
To subscribe to indications or events generated on the selected systems, follow these steps:

1. Log on to the Windows system on which HP SIM is installed. Ensure that the account used to log on has administrator privileges on HP SIM.
2. Select the required system, and click **Options**→**Events**→**Subscribe to WBEM Events**, as shown in Figure 3–9.

Administering Indications and Instances Using HP SIM

3.2 Subscribing to Indications (Events)

Figure 3–9 Subscribe to WBEM Events



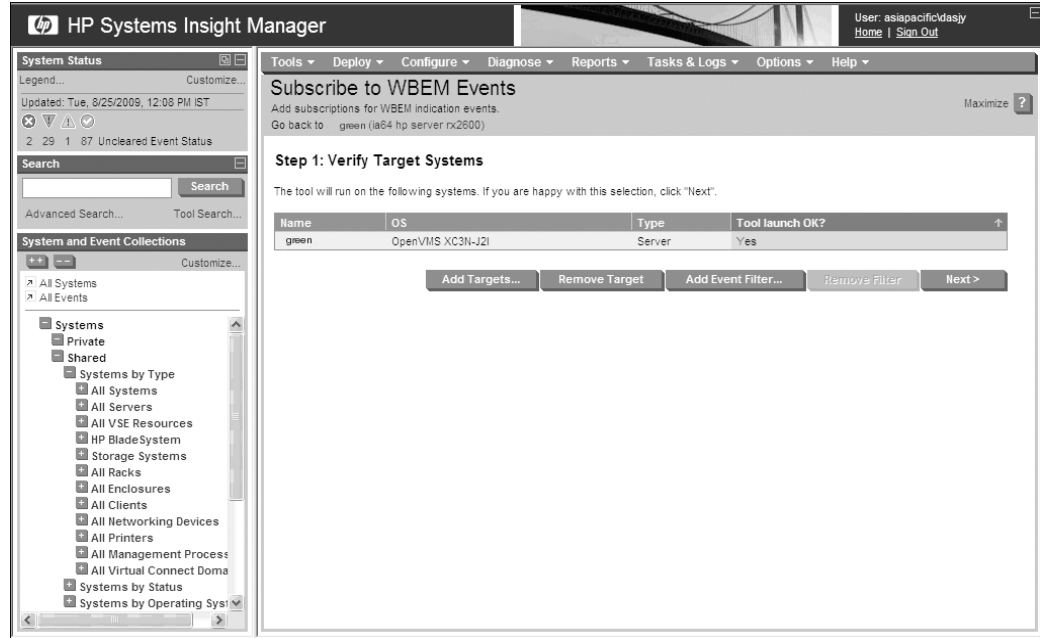
The Subscribe to WBEM Events page is displayed, as shown in Figure 3–10.

Administering Indications and Instances Using HP SIM 3.2

Subscribing to Indications (Events)

3. Click **Next** to verify the system, as shown in Figure 3–10.

Figure 3–10 Subscribe to WBEM Events Page - Verifying target system



4. Click **Run Now** to view the Task Results, as shown in Figure 3–11.

Figure 3–11 Subscribe to WBEM Events Page - Task Confirmation

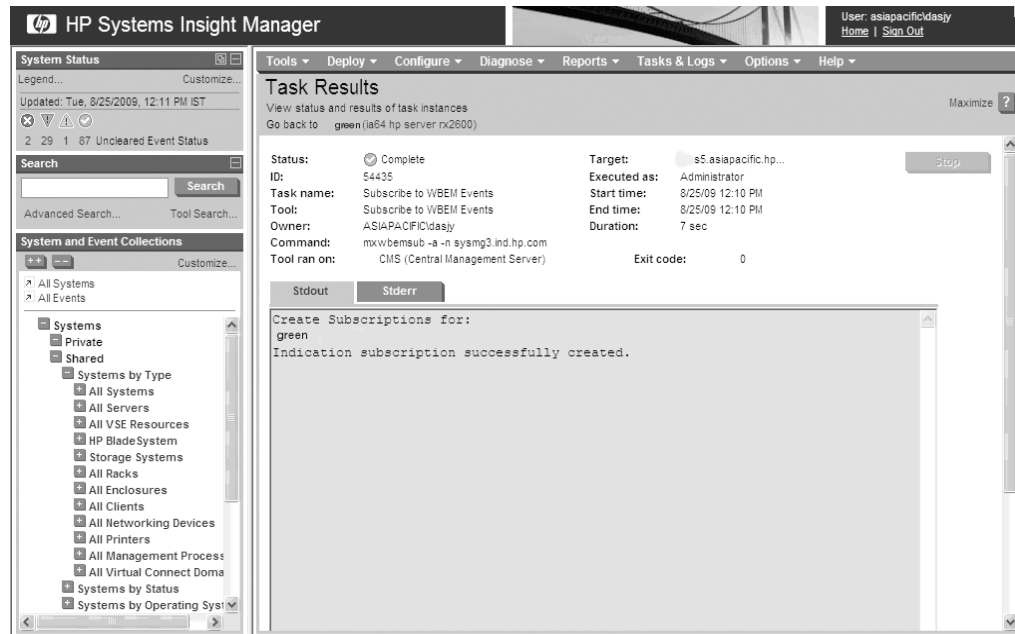


Administering Indications and Instances Using HP SIM

3.2 Subscribing to Indications (Events)

The Task Results page is displayed, as shown in Figure 3–12.

Figure 3–12 Subscribe to WBEM Events Page - Task Results



Administering Indications and Instances Using HP SIM

3.3 Unsubscribing to Indications (Events)

3.3 Unsubscribing to Indications (Events)

If you want to unsubscribe to indications or events generated on the selected systems, follow these steps:

1. Click **Options->Events->Unsubscribe to WBEM Events** to unsubscribe for event, as shown in Figure 3–13.

Figure 3–13 Unsubscribe to WBEM Events Page



Administering Indications and Instances Using HP SIM

3.3 Unsubscribing to Indications (Events)

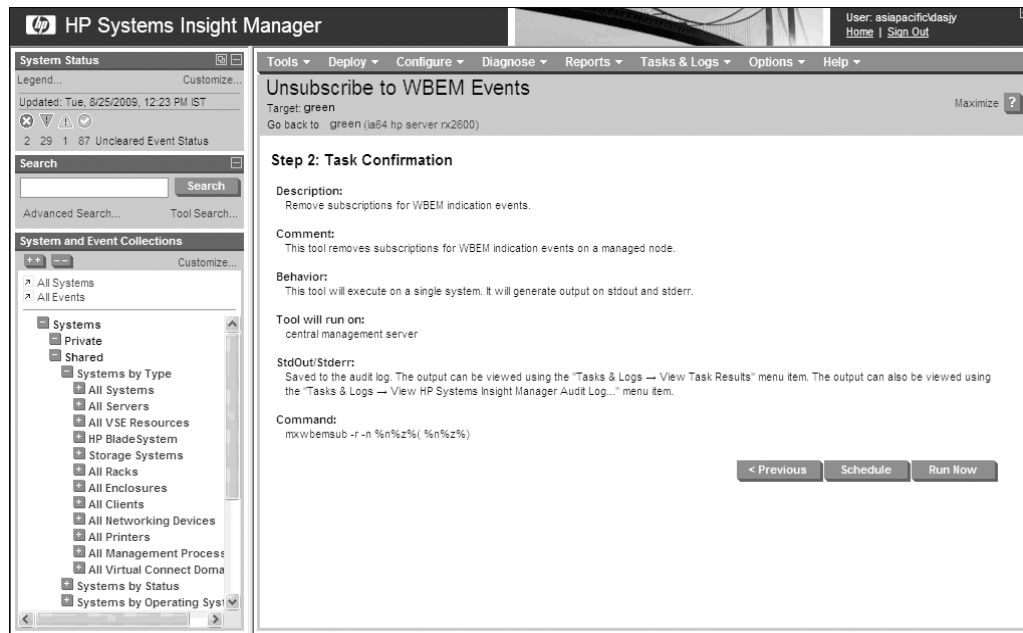
2. Click **Next**, as shown in Figure 3–14.

Figure 3–14 Unsubscribe to WBEM Events Page - Verifying target systems



3. Click **Run Now**, as shown in Figure 3–15.

Figure 3–15 Unsubscribe to WBEM Events Page - Task confirmation

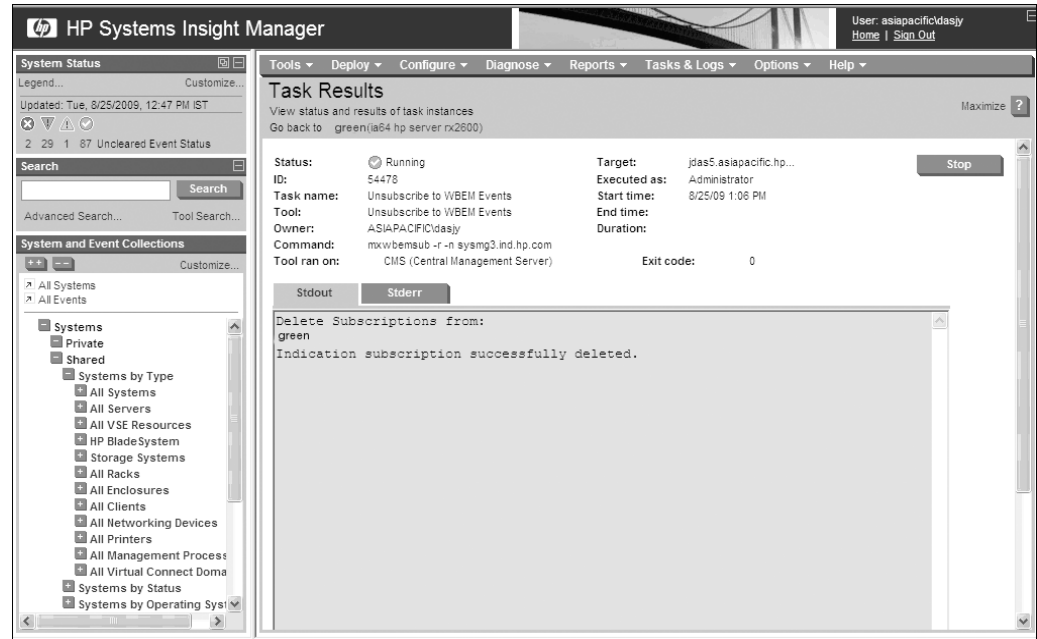


Administering Indications and Instances Using HP SIM

3.3 Unsubscribing to Indications (Events)

The Task Results page is displayed, as shown in Figure 3–16.

Figure 3–16 Unsubscribe to WBEM Events Page - Task Results



3.4 Viewing Indications (Events)

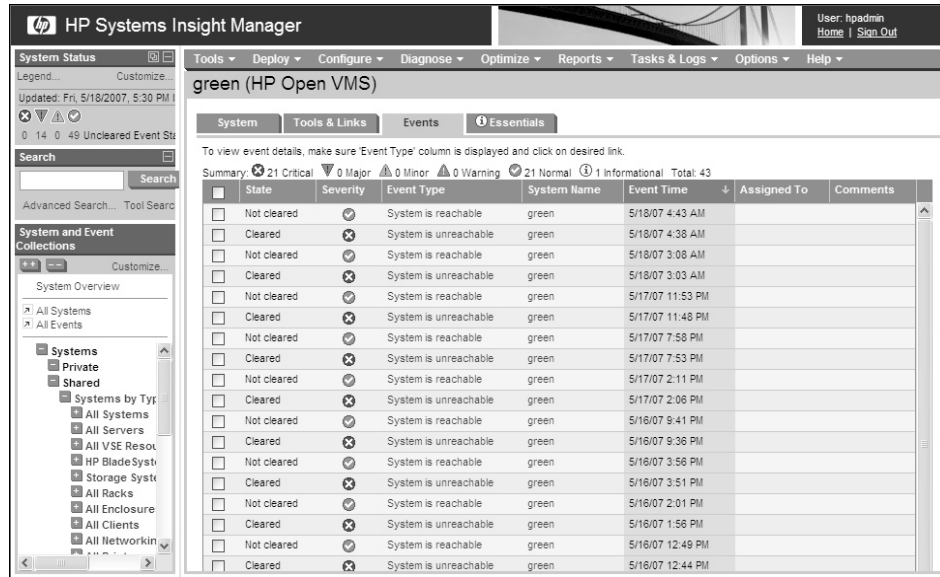
To view the list of indications or events generated on the selected systems, follow these steps:

1. Select **All Events** in the left pane of the HP SIM window. The list of events is displayed, as shown in Figure 3–17.

Administering Indications and Instances Using HP SIM

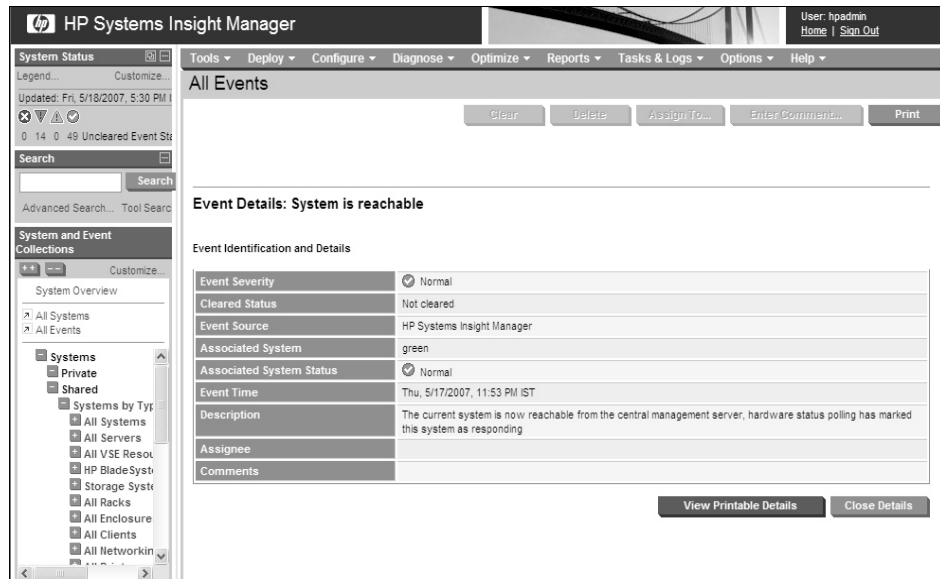
3.4 Viewing Indications (Events)

Figure 3–17 Events list



- To view the details of an event, select the event. The details are displayed at the bottom of the same window, as shown in Figure 3–18.

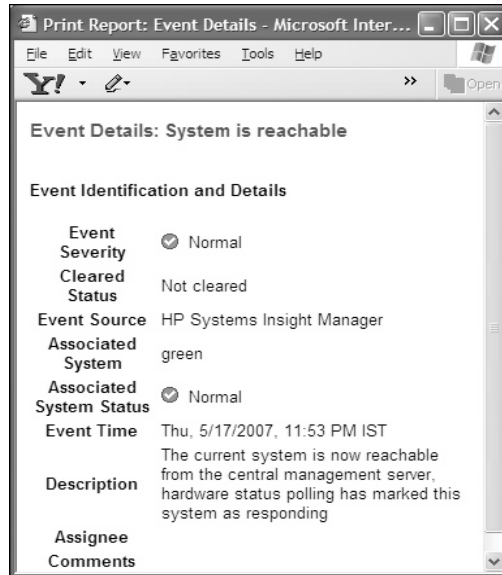
Figure 3–18 Event Details



- To obtain the printable version of the event details, click **View Printable Details** at the bottom of the window. The printable report is displayed in a new window, as shown in Figure 3–19.

Administering Indications and Instances Using HP SIM 3.4 Viewing Indications (Events)

Figure 3–19 Printable Event Details



Note

For more information, see the *HP Systems Insight Manager Installation and User's Guide*:

<http://docs.hp.com/en/netsys.html>

Administering Indications and Instances Using HP SIM

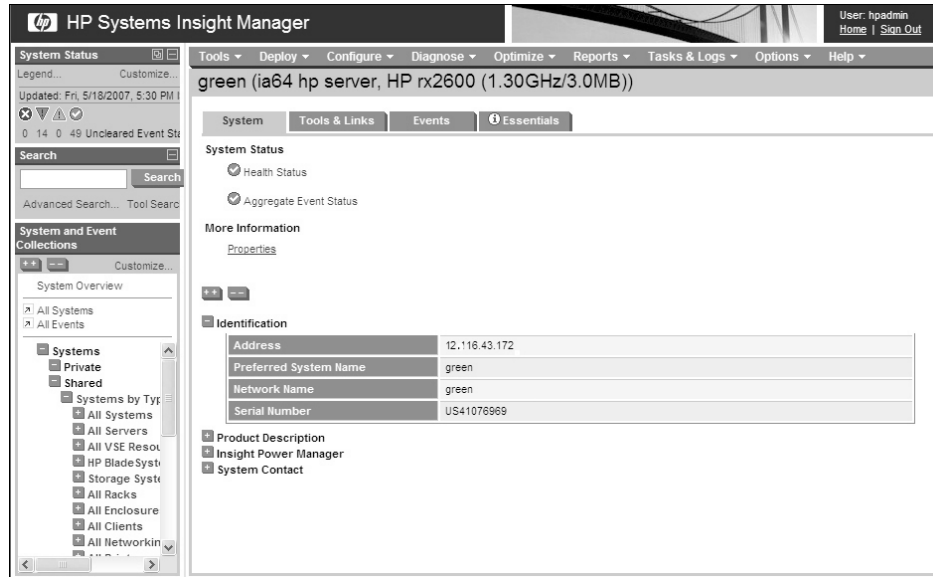
3.5 Viewing Instances

3.5 Viewing Instances

To view the various instances, follow these steps:

1. On the System Page of HP SIM, click **Properties**, as shown in Figure 3–20.

Figure 3–20 System Page



The Properties window is displayed. This window provides details about the system, as shown in Figure 3–21.

Figure 3–21 Properties Window

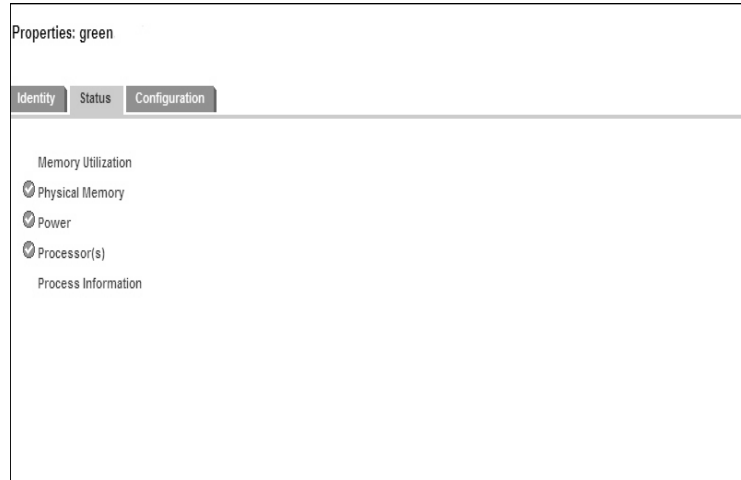
Properties: darwin.ind.hp.com

Identity	
Name	darwin
Model	ia64 hp server rx2660
UUID	5BE40CD1-EB2E-11DC-8E5B-1B8C15555ADC
User Name	QTV
Contact Info.	QTV
Computer System Status	✔ NORMAL
Serial #	SGH480412P
Up Time	13 days, 15 hours, 48 minutes
OS Type	OpenVMS
OS Version	V8.4
OS Capability	64 bit
Last Boot Up Time	1/25/11 8:23 PM (GMT -04:00)
Current Time Zone	GMT -04:00

Administering Indications and Instances Using HP SIM 3.5 Viewing Instances

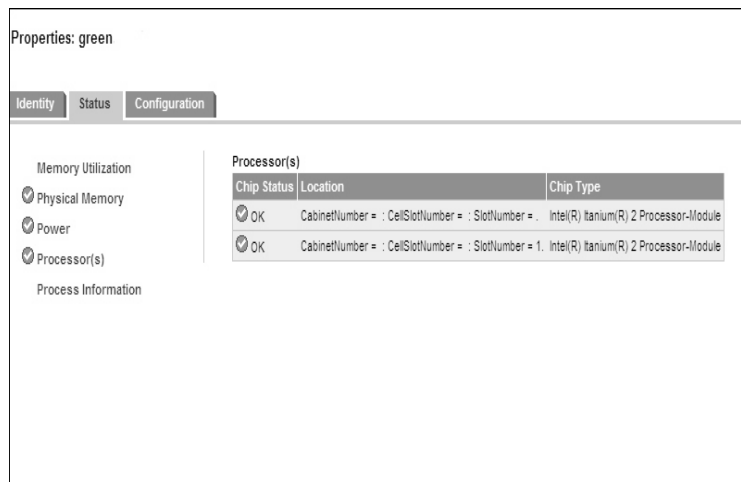
- To view the status of various instances, click **Status**, as shown in Figure 3–22.

Figure 3–22 Status Tab



- Click the required instance link to view more information about the instance, as shown in Figure 3–23.

Figure 3–23 Status

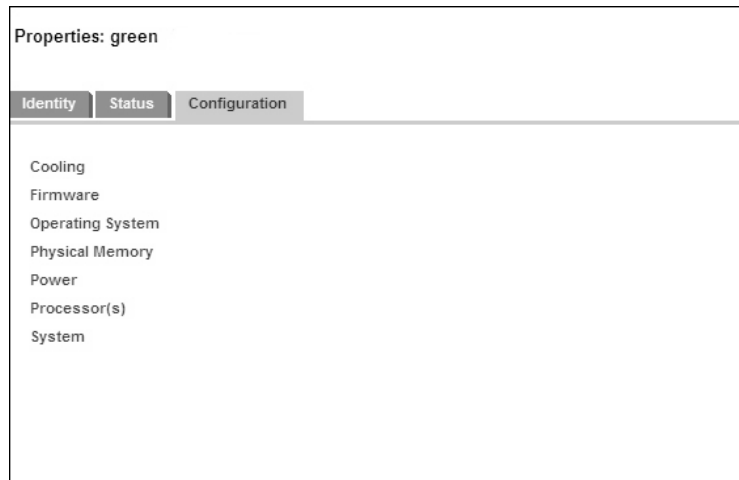


- To view information about the instance configuration, click **Configuration**, as shown in Figure 3–24.

Administering Indications and Instances Using HP SIM

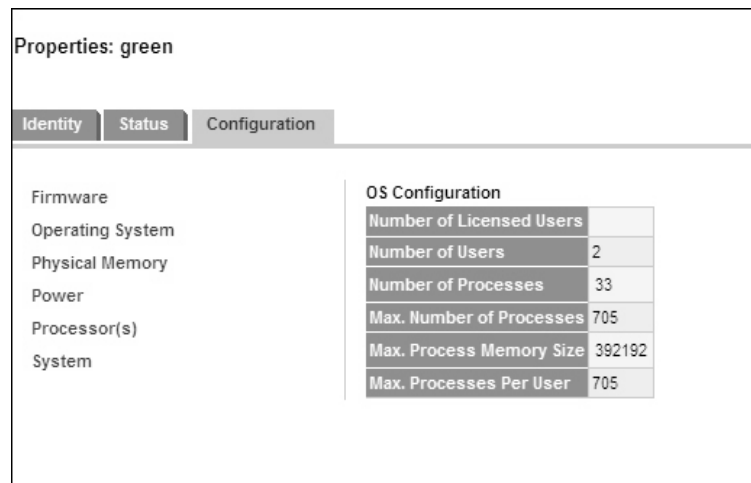
3.5 Viewing Instances

Figure 3–24 Configuration Tab



5. Click the required instance link to view the detailed instance configuration information, as shown in Figure 3–25.

Figure 3–25 Configuration



Note

For more information, see the *HP Systems Insight Manager Installation and User's Guide*:

<http://docs.hp.com/en/netsys.html>

Glossary

Central Management Server (CMS)

The server monitoring the client systems in the network using the WBEM Providers software.

Common Information Model (CIM)

An object-based model for describing managed resources. CIM uses the object-oriented paradigm, where managed objects are modeled using the concepts of classes and instances.

Common Information Model Object Manager (CIMOM)

The component of WBEM that manages the interaction between the providers and other modules in the WBEM environment. CIMOM manages CIM objects. It receives and processes CIM operation requests and issues responses.

CIM client

An entity in WBEM architecture which sends CIM Operation requests and receives CIM Operation responses. For example, HP SIM and other network management applications are considered CIM clients.

CIM server

The component of WBEM that manages the interaction between the providers and other modules in the WBEM environment. It is also known as CIMOM.

consumer

A recipient of services. For example, an indication consumer will receive indications (events) that occur in system hardware components.

Distributed Management Task Force (DMTF)

An industry organization involved in the development, adoption, and interoperability of management standards and initiatives for enterprise and Internet environments.

event

An alert generated when an unusual activity is detected on a monitored hardware device.

HP Systems Insight Manager (HP SIM)

HP's management application installed on the CMS that uses WBEM instrumentation on operating systems, such as HP-UX, HP OpenVMS, Linux, and Windows.

indication

An alert or a warning about the failure of a monitored hardware device. It is equivalent to an event in the Event Monitoring Service (EMS) framework.

indication provider

It translates events generated by the Event Monitoring Service (EMS) monitors into WBEM indications, and reports them to the CIMOM.

instance

A representation of the actual physical object that belongs to a class.

instance provider

It provides information about devices, such as model number and serial number of a CPU. In the Support Tools Manager (STM), this functionality is accomplished by Information (Info) Tools.

managed resource

A hardware device that is monitored.

management application

Any application that can be used to query for information about monitored devices and view indications and instances. For example, HP Systems Insight Manager (SIM).

subscription

Configuring WBEM Providers for consumers to receive indications. For example, HP SIM can subscribe to indications that are generated on hardware devices on a system.

WBEM (Web-Based Enterprise Management)

A collection of standards that aid large-scale systems management. WBEM allows management applications to monitor systems in a network.

B

benefits
 WBEM Providers, 1–1

C

Central Management Server *See* CMS
Common Information Model *See* CIM
CIM, 3–1
CIMOM, 1–4, 1–6
CIMPROVIDER
 -L -S option, 2–3, 2–4, 2–5
CIMUSER
 -A -U option, 2–5
 -HELP option, 2–5
 -R -U option, 2–5
CMS, 3–7
command procedure file, 2–3
common files, 2–3
Computer System Chassis Instance Provider, 1–3
CPU Instance Provider, 1–2

D

Distributed Management Task Force *See* DMTF
daemon
 WBEM Set Host Parameters, 1–5
 WBEM Utilization Provider, 1–5
data sheet, v
DMTF, 3–1
documentation files, 2–3

E

EMS Wrapper Provider, 1–4
Enclosure Provider, 1–3
Environmental Instance Provider, 1–2
event
 details, 3–14
 printable report, 3–14
Event Monitoring Service, 1–4
events list, 1–4

F

Forward Progress Log *See* FPL
features
 WBEM Providers, 1–1
Firmware Revision Instance Provider, 1–3
FPL, 1–4

G

global protocol, 3–2

H

hardware indications, 1–4
hardware monitor
 FPL, 1–4
 ia64 Core Hardware, 1–4
HP OpenVMS Integrity Servers, 2–1
HP TCP/IP, 2–1
HP WBEM Services, 2–1
 logicals, 2–3, 2–5

I

index file, 1–4
indication provider
 EMS Wrapper, 1–4
 LAN Indication Provider, 1–4
instance
 configuration, 3–17
 property, 3–16
 status, 3–17
instance provider
 Computer System Chassis, 1–3
 CPU, 1–2
 Enclosure, 1–3
 Environmental, 1–2
 Firmware Revision, 1–3
 LAN Provider, 1–3
 Management Processor, 1–3
 Memory, 1–2
 Utilization Provider, 1–3
 VM Provider, 1–3

L

LAN Indication Provider, 1–4
LAN Provider, 1–3

M

manifest file, 2–2
Memory Instance Provider, 1–2
MOF file, 2–3
MP Instance Provider, 1–3

O

Operating Environment *See* OE
OE, 2–1
OpenVMS EMS
 See Event Monitoring Service

P

POLYCENTER Software Installation *See* PCSI
PCSI, 2–2

S

Systems Insight Manager *See* SIM
shareable image, 2–3

SIM, 1–5
system protocol, 3–5

T

task result, 3–9

U

Utilization Provider, 1–3

V

VM Provider, 1–3

W

Web-Based Enterprise Management *See* WBEM
WBEM, 1–1
WBEMEXEC, 2–9
WBEM Providers
 architecture, 1–5
 indication providers, 1–3
 instance provider, 1–2
 register, 2–4

X

XML file, 2–9