

**Introduction to HP System Management
Homepage for OpenVMS**

Table of Contents

1. Introduction	3
2. Why HP SMH?	3
3. What is New in HP SMH?	3
3.1. Display Changes	3
4. Timelines	8
5. Support.....	8
6. FAQ.....	8
6.1. What are the products I need to install with SMH?	8
6.2. Does SMH install if Insight Management Agents is already installed on the system?	9
6.3. What features were in the Insight Management Agents that are NOT in SMH?9	
6.4. Will HP continue to support Insight Management Agents after releasing SMH? If so, for how long.	9
6.5. Will I be able to run HP Secure WEB Server separately while running SMH?..	9

1. Introduction

HP System Management Homepage (HP SMH) is the single system management solution for managing HP OpenVMS systems. HP SMH is also available for HP-UX, Linux and Microsoft® Windows® systems.

By aggregating data from HP Insight Management Agents the System Management Homepage provides a secure and intuitive interface to review in-depth hardware configuration and status data, performance metrics, system thresholds and software version information.

HP System Management Homepage (HP SMH) replaces the HP Insight Management Agents on OpenVMS.

2. Why HP SMH?

- SMH is the Common HP solution for managing a single “system” (physical or virtual server, complex, etc.)
- SMH provides the Framework for seamless Consolidation of different Management Tools and a framework to simplify the management of individual Alpha and Integrity servers running OpenVMS. New management tools can be added easily to HP SMH.
- SMH is based on standard apache web server (HP Secure WEB Server), enables the use of latest web server capabilities like render PHP (Hypertext Preprocessor) pages, JavaScript's/CGI files.

3. What is New in HP SMH?

The current version of SMH for OpenVMS provides a display/GUI which is consistent with a similar display/GUI on Windows or Linux SMH implementations.

Most of the features of Insight Management Agents remains the same under SMH. The user is able view the system configuration, set thresholds, generate traps and access/collect data from HP SIM (HP Systems Insight Manager) using HP SMH just as they did with HP Insight Management Agents.

Apart from the existing features of Insight Management Agents the following new features are added in SMH:

- Installation of SMH on non-system disks (Note that SMH requires ODS-5 disks for installation)
- Non-public Read community

Moving forward more management functionality will be added to SMH.

Please send any suggestions or comments you may have to this email ID:

OpenVMS-SMH@external.groups.hp.com

3.1. Display Changes

The following screenshots show different HP SMH and HP Insight Management Agents pages:

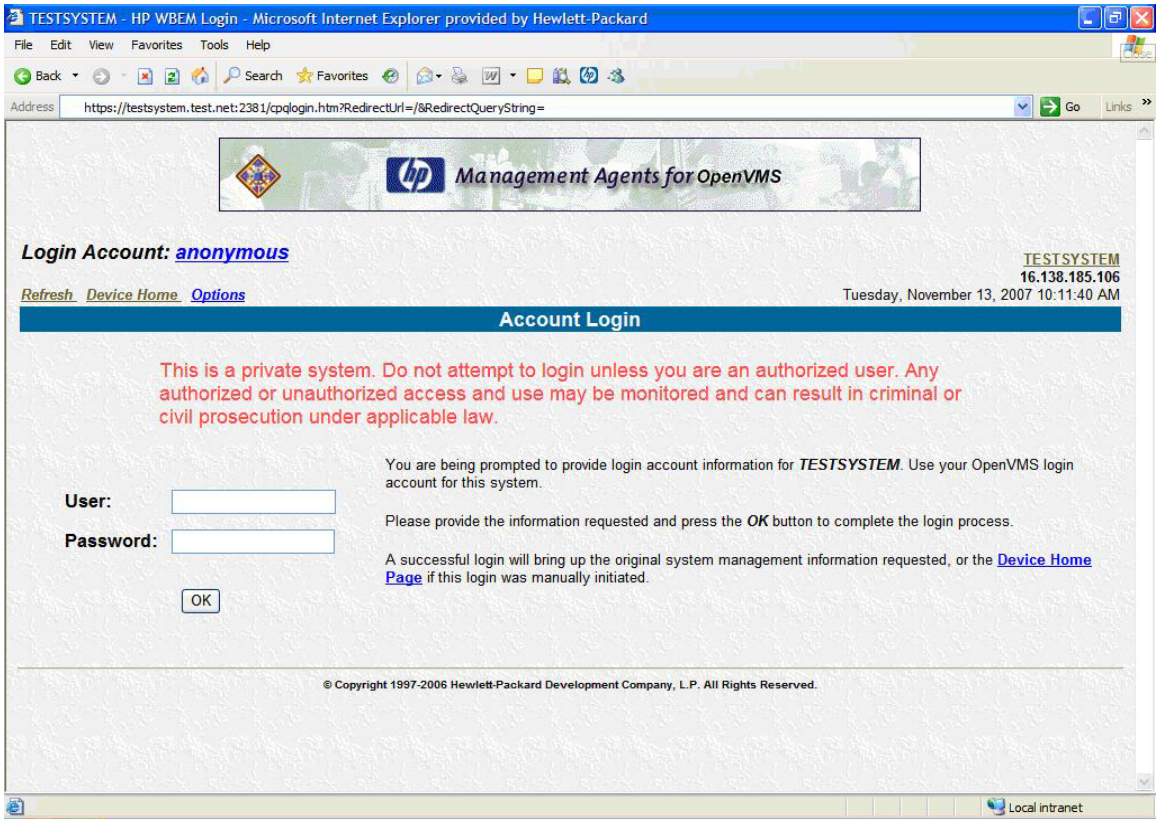


Figure 1: Login Page (Insight Management Agents)

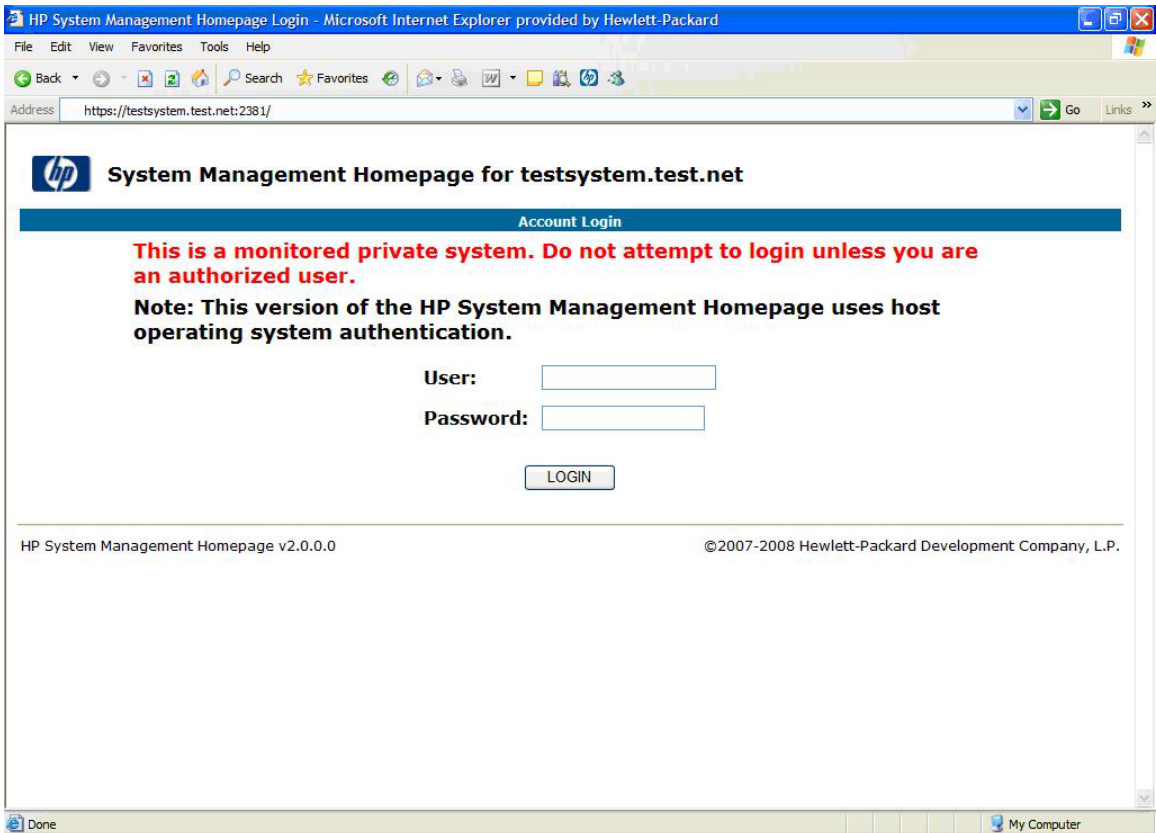


Figure 2: Login Page (HP SMH)

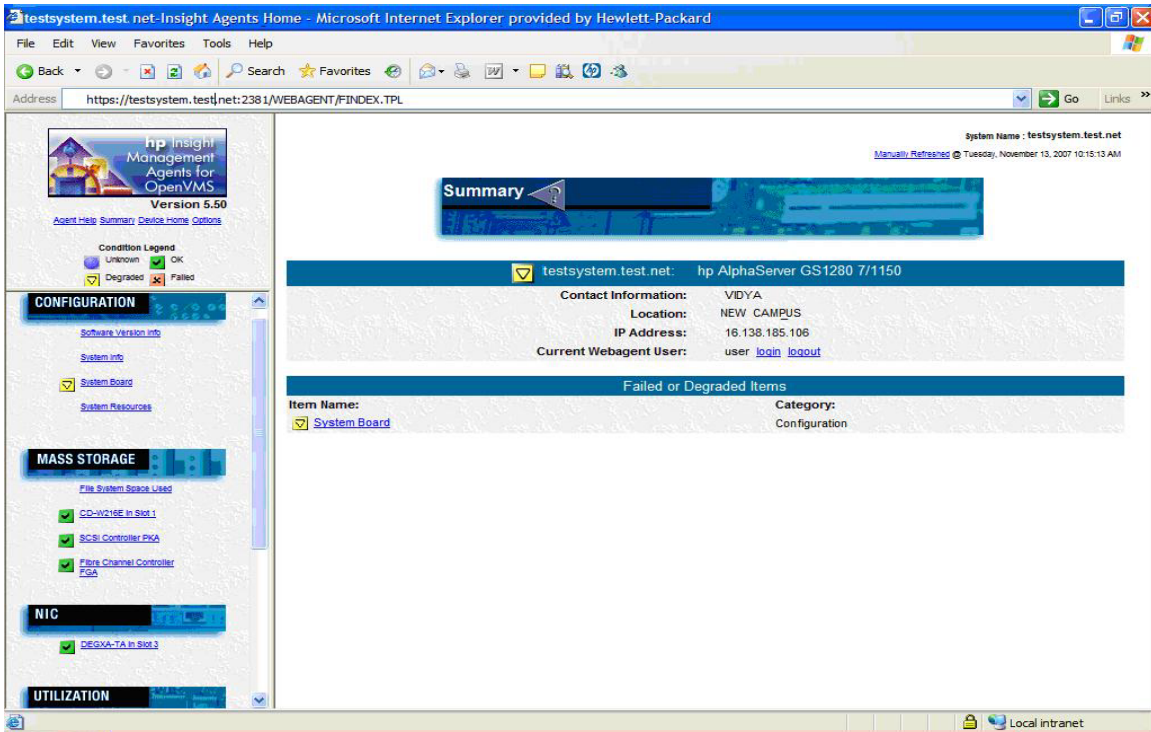


Figure 3: overall system Status and different categories (“System”, “Storage”, “NIC”, “Recovery” and “Utilization”) for Navigation (Insight Management Agents)

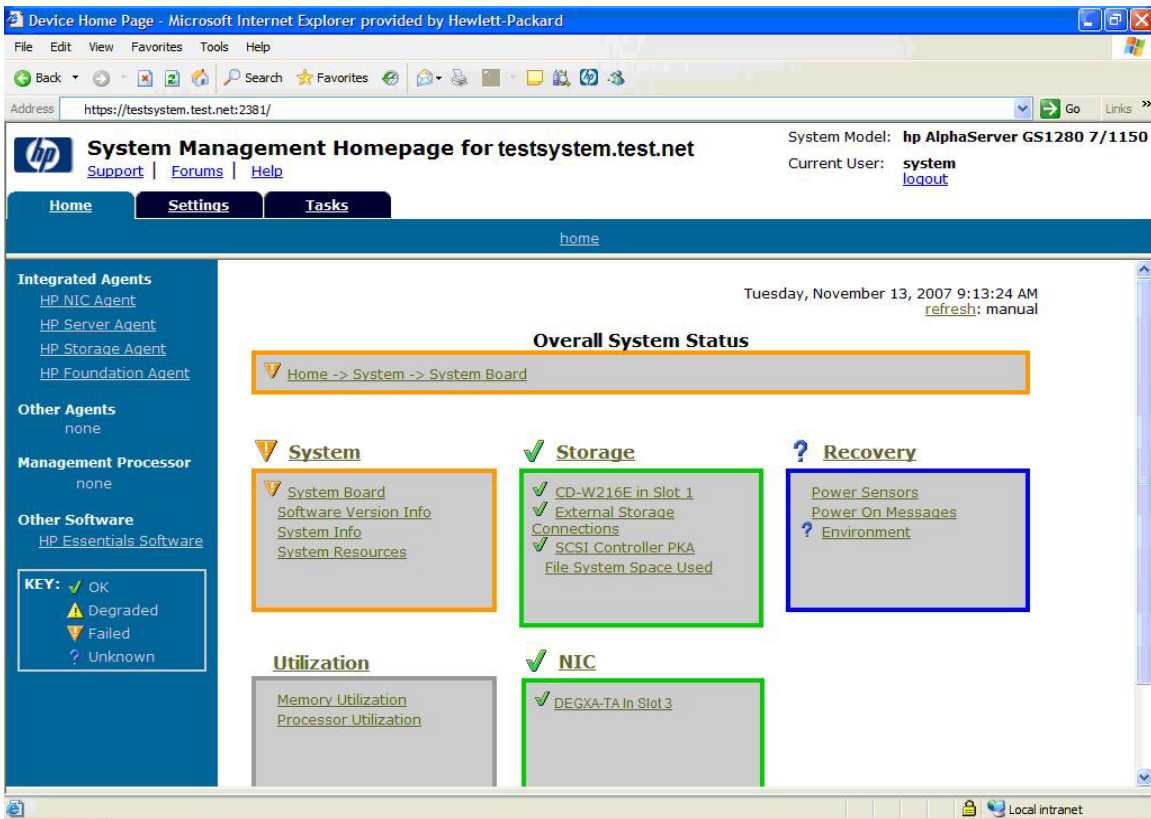


Figure 4: overall system Status and different categories (“System”, “Storage”, “NIC”, “Recovery” and “Utilization”) for Navigation (HP SMH)

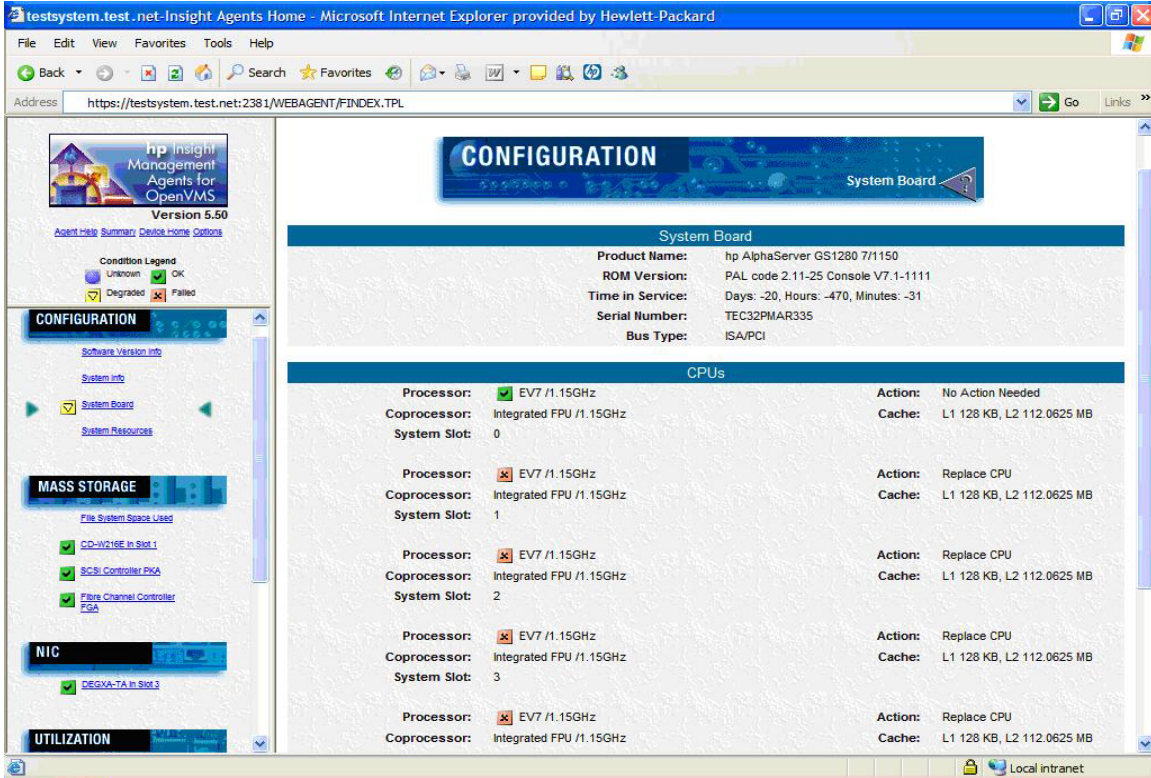


Figure 5: Sample “system board” Information (Insight Management Agents)

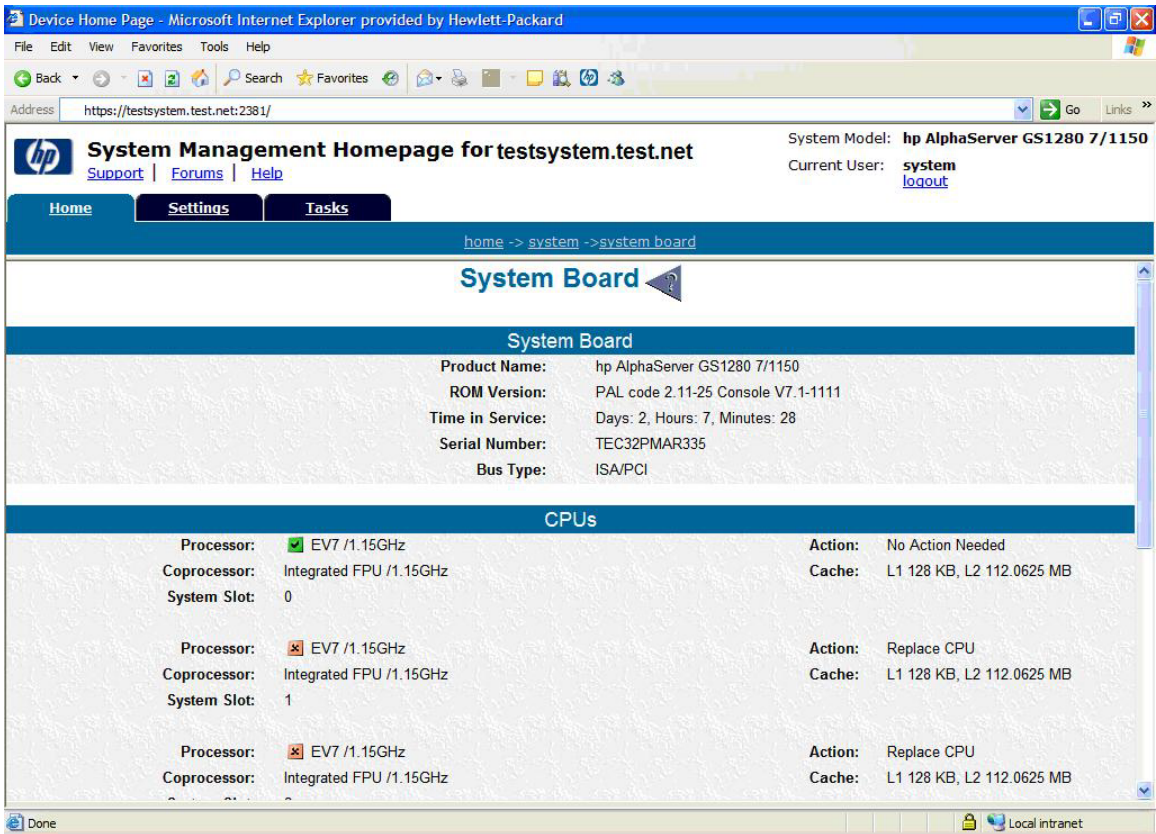


Figure 6: Sample "system board" Information (HP SMH)

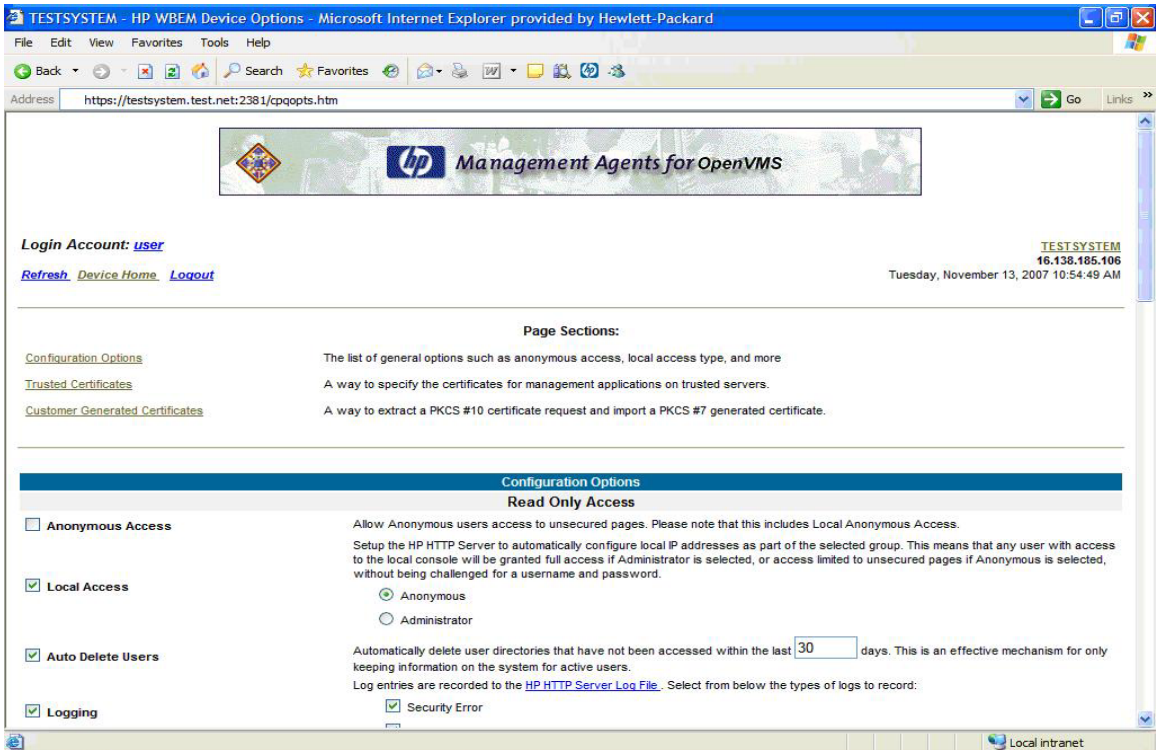


Figure 7: Options Page to changes settings for "Local/Anonymous Access", "IP Restriction", "Trust Mode", "Trusted Certificates", "Custom Generated Certificates" (Insight Management Agents)

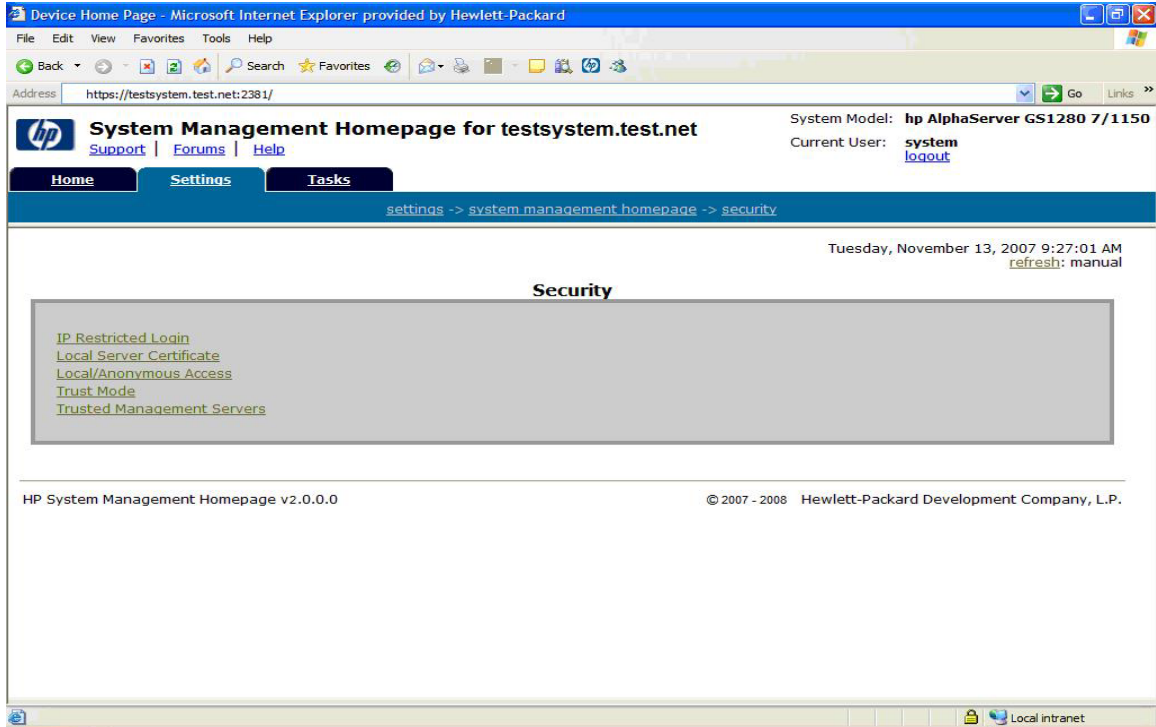


Figure 8: Page to changes settings for “Local/Anonymous Access”, “IP Restriction”, “Trust Mode”, “Trusted Certificates”, “Custom Generated Certificates” (HP SMH)

4. Timelines

HP SMH for OpenVMS is planned for release in the first half of CY 2008.

5. Support

HP SMH is supported on the following versions of OpenVMS:

- OpenVMS Alpha V7.3-2, V8.2, and V8.3
- OpenVMS Integrity servers V8.2-1, V8.3, and V8.3-1H1

Hardware Support:

- Alpha and Integrity server platforms

Browser support:

- Internet explorer V6.0 SP2 and above
- HP Secure WEB Browser for OpenVMS V1.7-13
(<http://h71000.www7.hp.com/openvms/products/ips/cswb/cswb.html>)

6. FAQ

6.1. What are the products I need to install with SMH?

Since SMH is based on HP Secure WEB Server and PHP, HP Secure WEB Server (<http://h71000.www7.hp.com/openvms/products/ips/apache/cswws.html>) and PHP (http://h71000.www7.hp.com/openvms/products/ips/apache/cswws_php.html) products should

be installed before installing SMH. Along with this TCPIP (with SNMP configured), SSL (<http://h71000.www7.hp.com/openvms/products/ssl/ssl.html>) are also required. TCPIP & SSL are part of the Operating system starting from OpenVMS V8.3.

6.2. Does SMH install if Insight Management Agents is already installed on the system?

No. The SMH product will not install if Insight Management Agents product is installed on the system. Please remove the Insight Management Agents by the below commands, before installing SMH.

```
$ @SYS$SPECIFIC: [WBEM]WBEM$SHUTDOWN.COM
$ PRODUCT REMOVE MGMTAGENTS
$ ! Install the SMH product
```

6.3. What features were in the Insight Management Agents that are NOT in SMH?

SMH does not have the following components as compared to the Insight Management Agents:

- DCL Show
- GSView
- Invoking OpenVMS Management Station Link
- Invoking Availability Manager Link
- Netscape browser support

In case there is dependency on any of these components, Please send any suggestions or comments you may have to this email ID:

OpenVMS-SMH@external.groups.hp.com

6.4. Will HP continue to support Insight Management Agents after releasing SMH? If so, for how long.

Yes. The support for Insight Management Agents will continue after SMH is released. The timelines of the support will be updated in the Insight Management Agents web address: <http://www.hp.com/products/openvms/managementagents/>

6.5. Will I be able to run HP Secure WEB Server separately while running SMH?

Yes. The SMH runs HP Secure WEB Server (Apache) as a separate instance on port 2301/2381. Running the HP Secure WEB Server on other ports is still possible.